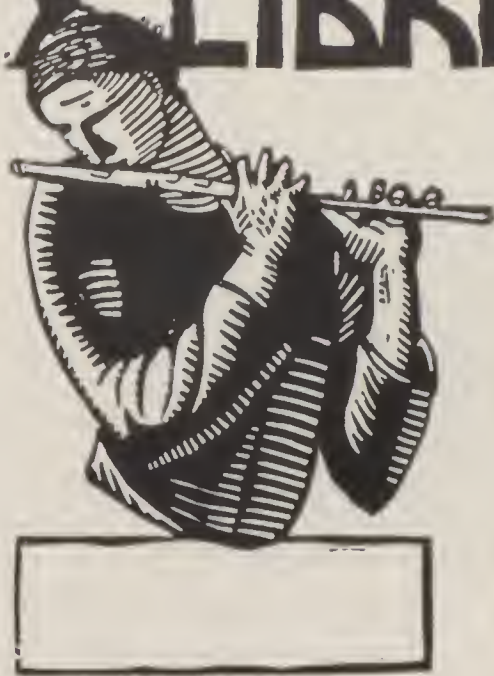


TREASURE CHEST 37



EX LIBRIS



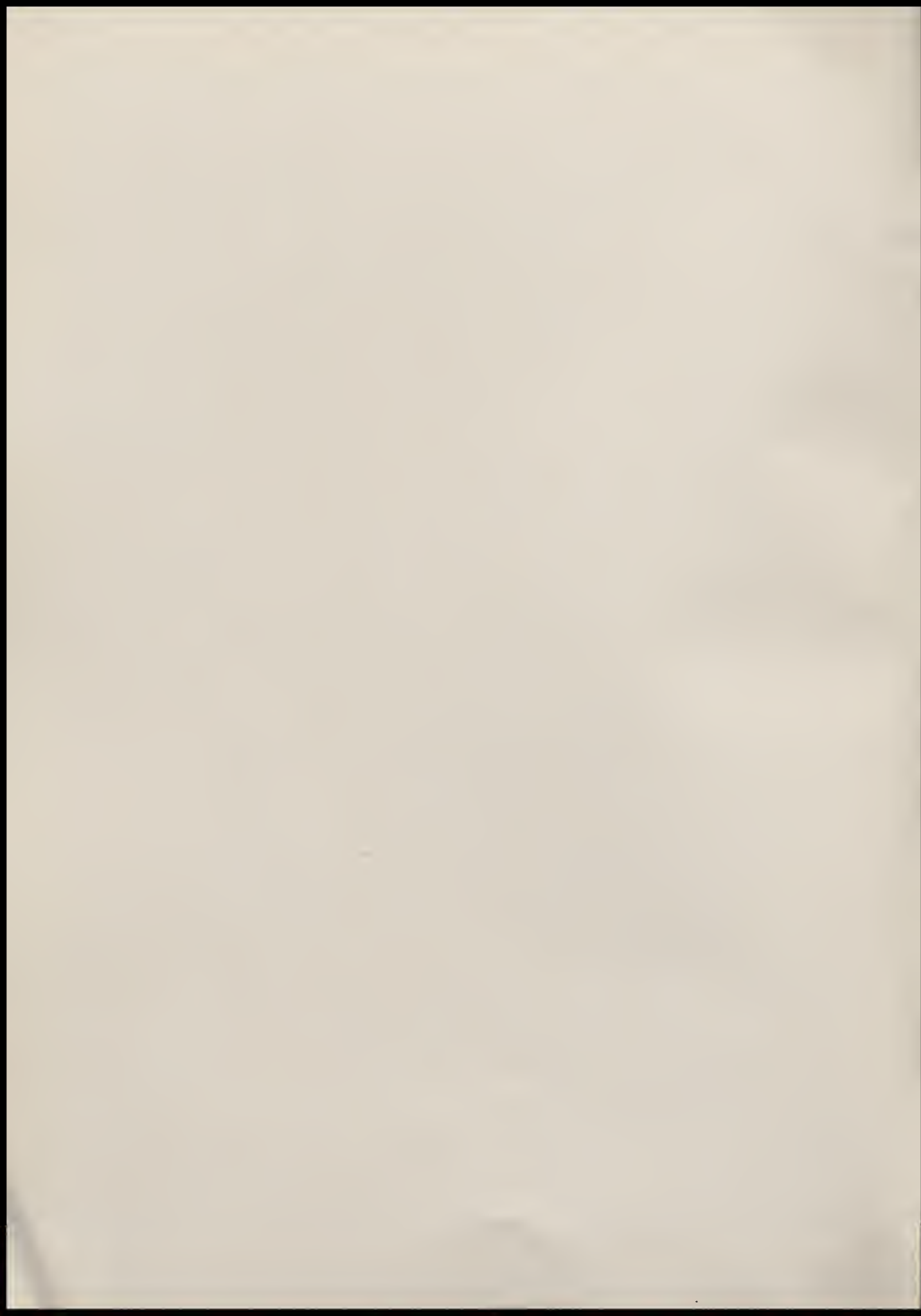


TREASURE CHEST

Published by the
ASSOCIATED STUDENTS of
JOHN R. ROGERS HIGH SCHOOL
Spokane, Washington

Editor Glen Chambers

Associate Norris Keeler





Ernest Turnley
1921-1936

Thelma Anderson
1922-1936

Virginia Moser
1920-1937



In Memoriam



FOREWORD

To the students and faculty
Whose cooperation
And faithfulness
Has made this year's
Treasure Chest possible
This book is presented
As a lasting remembrance
Of the school life
Of 1936-1937

DEDICATION

To the sports
At John R. Rogers
Which keep alive
That spirit of loyal
Enthusiasm
For which
The student body
Is famed
This book
Is dedicated

J. D. MEYER
PRINCIPAL



E. R. JUNNETT
VICE-PRINCIPAL



First Row: Harman, Benjamin, Swann, LeFevre, Perkins, Herbert. Second Row: Swenson, Herrington, Kapek, Purdy, Stevens, Brown, Van Austene, Meyer. Third Row: Eaman, Bendele, McMahan, Benjamin, Budwin, Finnegan, Weymouth. Fourth Row: Jinnett, Hughes, Minzel, Becher, Byrne, Herrington, Boyce, Thorne. Fifth Row: Tewinkel, Hubbard, Starr, Saltz, Black, Elsensohn, Coburn. Sixth Row: Hubbell, Barton, Mooberry, Smith, Summers (student teacher), Doolittle.

FACULTY

ADMINISTRATIVE

J. D. Meyer, Principal
E. R. Jinnett, Vice-Principal
Rose Finnegan, Girls' Adviser
Joseph M. Tewinkel, Boys' Adviser
Carolyn F. Kapek, Librarian
Lutle B. Brown, Study Hall
Blanche Hill Swenson, Study Hall
Edith Wisemann, Secretary
Evelyn Meranda, Stenographer and Book Clerk

ENGLISH

Joseph M. Tewinkel, Head
Theadora Budwin
Charlssa Harman
Elizabeth Herbert
Ray G. Hubbard
Hazel Stevens
Ruth Swann
Faye C. Weymouth

COMMERCIAL

A. P. Coburn, Head
Monroe Hubbell
Rene G. McMahan
Jack W. Mooberry
Ethel Van Austene

SCIENCE

L. W. Saltz, Head
Henry Bendele
J. W. Black
James Eaman
Irvin R. Minzel

MATHEMATICS

Walter E. Doolittle, Head
W. L. Herrington
J. L. Purdy

SOCIAL SCIENCE

L. T. Byrne, Head
E. T. Becher
James Elsensohn
Iva Morrison
Margaret Benjamin

FOREIGN LANGUAGES

Marle Boyce
Marion G. LeFevre

MANUAL AND FINE ARTS

A. R. Barton
E. C. Hughes
C. E. Russum
E. Dale Smith

HOME ECONOMICS

Edna Herrington
Thelma Thorne

PHYSICAL EDUCATION

M. J. Benjamin
Mabel Perkins

MUSIC

Glenn B. Starr
Blanche Hill Swenson





CLASSES





THIRY
VALSVIG

FRENCH
HUGHES

SURIANO
HOPKINS

BEVAN
CAMPBELL

BYSEGGER
JONES

JANUARY SENIOR LEADERS

Frank Thiry	Valedictorian
Mildred French	Entertainer
Carmine Suriano	Athlete
Genevieve Bevan	Editor
Engene Bysegger	Dramatist
Elin Valsvig	Salutatorian
Art Hughes	Class Prexy
Juanita Hopkins	Musician
Bill Campbell	Scientist
Lelia Jones	Girls' League

JANUARY SENIOR HONOR ROLL

Frank Thiry
Elin Valsvig
Helen Hickok
Anita Hinshaw
Blanche Shiosaki
Helen Shaw
Lucille Huntley
Glenn Luse
William Campbell
Lelia Jones
Lorraine Felber

Charles McHarness
Genevieve Bevan
Walter Peer
Geraldine Ambrose
Helen Joy
Leona Robertson
Arthur Hughes
Eunice Wilson
Myrtle White
Eugene Bysegger
Peggy McLean

Mildred French
Edna Nelson
Kathryn Monahan
Vernadine Richter
Charlotte Brooks
Ann Hunt
Mary Dippel
Warren Kohler
Carmine Suriano
Gerald Koenig
Irene Corkrum

FRANK AVERY
Bemiss
Commercial
Record Staff
Boys' Federation

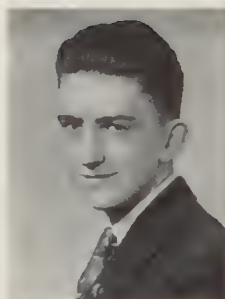
HAZEL BAKER
Longfellow
General
Home Economics Club 1-2-3-4
Secretary Home Economics
Club
Art Club
Miss Finnegan's Office 2-3
School Welfare Secretary

ELMER BAUMGARTNER
Hamilton
Art Club 4
German Club 3
Hi-Y Club President 4

ROBERT BERG
Whitman
Montero 3-4
"R" Club 3-4
Record Staff 4
Fire Squad 4
Secretary Athletic Department
Boys' Federation

GENEVIEVE BEVAN
Hamilton
Commercial
Girls' League
Big Sister Chairman
Room Representative
Record Staff 3-4
Editor of Record
Treasure Chest Staff
Quill and Scroll
Rogers Service Club
National Honor Society
Student Council
Student Council President

ELEANOR BOMBINO
Cooper
Hall Patrol
Miss Finnegan's Office
Nurse's Office



JUNE BUHREN
Regal
Commercial
G. A. C. Treasurer
Baseball 1-2-3-4
Basketball 1-2-3-4
Volleyball 1-2-3-4
Room Representative 1-2-3
Camp Cookery Chairman
Handy Andy 1-2
Gym Office 1-2

EUGENE BYSEGGER
Bemiss
Junior Dramatic Club 1-2
German Club 1-2
Footlights Club 3-4
Secretary-Treasurer Rifle
Team 4
"The Two Vagabonds" 2
"The Lucky Jade" 3
"The Buccaneers" 4
"Pickles" 4
"The Ghost Train" 3
"The Whole Town's Talk-
ing" 4
National Honor Society 4
Rogers Service Club
Chairman New Project
Committee

BILL CAMPBELL
Bemiss
National Honor Society
Senior Honor Roll
Junior Dramatic Club
President
Student Council 2
Footlights Club Vice
President
Cosmic Club 4
Art Club 3-4
Fire Squad
Tutoring 4
Boys' Advisory Council 4
Rogers Reporter (KFPY)
Football Manager
"Ghost Train"
"Arms and the Man"
"The Lucky Jade"

HOWARD COFFMAN
Arlington
Football 1-2-3
Basketball 1-2
President Athletic Department
Boys' Federation
Fire Squad

ISABELLA CORFIELD
Bemiss
General
Volleyball 1
Tumbling 1
Band 4
Record Staff 4
"The Lucky Jade" 2
"The Whole Town's Talk-
ing" 4
Library 2-3
Social Service Department 2-3
Pirate Girl 4

STUART DAVIS
Whitman
"R" Club
Fire Squad
Tennis 3-4
Basketball 3-4
Track 2
Secretary Senior Class
Secretary Athletic Department
Boys' Federation

RAY DILLMAN
Mead
Boys' Federation
Football 2-3



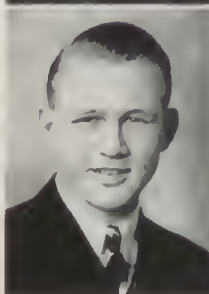
BILLY HERBERT
Lewis and Clark
Boys' Federation

HARRY FAGGETTER
Hamilton
Boys' Federation



HELEN HICKOK
Regal
National Honor Society
Rogers Service Club
Quill and Scroll
Vice President G. A. C.
Senior Honor Roll
Main Office
Tutor
Secretary Big Sister Department 4
Baseball 1-2-3-4
Volleyball 1-2-3
Basketball 3-4
Record Staff
Annual Staff

DALE FAURURN
Regal
Montero 3-4
Vice Chairman Boys' Federation
Handicraft Department
Chairman Boys' Federation
Outdoor Life Department
Track 4



ANITA HINSHAW
Arlington
Journalism Award
National Honor Society
Girls' League Honor Roll
Senior Honor Roll
Editor Girls' League "Gossip"
Quill and Scroll
Rogers Service Club
Record Staff
Annual Staff
Big Sister
Chairman Handy Andy Game Committees
Secretary Big Sister Department

MILDRED FRENCH
Hamilton
Basketball 1
Volley Ball 1
Chairman Dancing Group 2
Junior Dramatic Club 1-2
Handy Andy 2
Footlights 3-4
Big Sister 3
Rogers Service Club 3-4
Record Staff 4
Treasurer Girls' League 4



EDNA HOLLY
Longfellow
Gym Office 4
Girls' League

WILLIS GLANVILLE
Arlington
Orchestra 3-4
Band 2-3-4
Cub Edition 4
Track 3-4



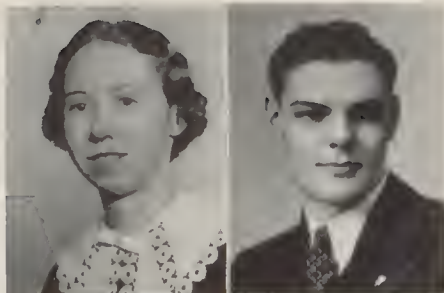
JUANITA HOPKINS
Longfellow
Footlights 3-4
Student Council 4
Vice President 11B Class
President Las Gitanas 1-2
Quill and Scroll 3-4
Dancing 2
Big Sister 3-4
Record Staff 3-4
Annual Staff 3-4
Inter Class Debate 3
Speech Contest Winner 2
Feature Editor Record 3-4
Footlights Orchestra 3-4

LEONARD WILLIAM HASKINS
Lewis and Clark
Boys' Federation
Student Council



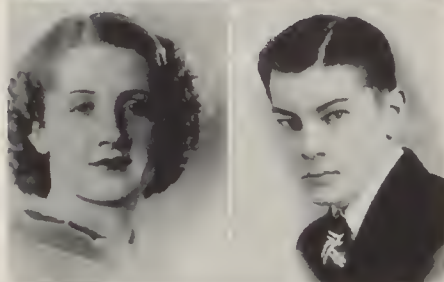
ART HUGHES
Spangle High
President 12A Class
National Honor Society
Football 3-4

ANN HUNT
Cooper
 Senior Honor Roll
 Nurse's Office 4
 Library Checker
 Secretary of G. A. C. 4
 Basketball 2-3-4
 Tumbling 2
 Girls' League Honor Roll
 Record Staff



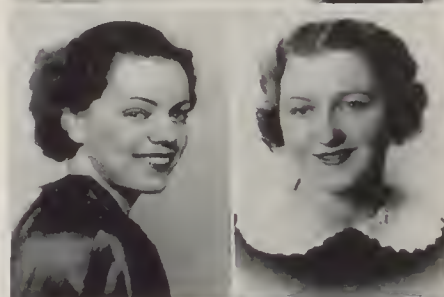
GLEN LUSE
Bemiss
 National Honor Society
 Football 1-2-4
 Tennis 3-4
 Track 2-3
 Math Club
 Spanish Club 3-4

LORRAINE JAKES
Bemiss
 Cosmic Club
 G. A. C.
 Spanish Club
 Volleyball 1-2-3-4
 Basketball 1-2-3-4
 Baseball 2-3-4



CHARLES McHARNES
Columbia
 Spanish Club
 Upper Class Advisory Committee 3
 Football and Baseball Manager 2-3

FRANCES JONES
Arlington
 "The Whole Town's Talking"



PEGGY McLEAN
Regal
 Senior Honor Roll
 President Senior Home Room
 French Club
 G. A. C.
 Basketball 2-3-4
 Volleyball 2-3
 Baseball 2-3-4
 Manager Basketball Tournament
 Chairman Gym Office
 Big Sister
 Record Staff
 Girls' League Honor Roll 1-2
 Tumbling

LELIA JONES
Cooper
 Vice President 9B Class
 President 9A Class
 Treasurer Girls' League
 Vice President Girls' League
 Tutor 9B English
 Chairman Entertainment Department
 Day Editor The Record
 Big Sister
 Vice President Junior Dramatics
 Secretary Harding Debate Club
 President Harding Debate Club
 Student Council 1-2-3
 President of Student Council
 Quill and Scroll
 National Honor Society
 Chairman 12A Commencement Program
 Chairman Dance Committee
 Production Manager of Girls' League "Gossip"
 Study Hall Worker 1-2-3



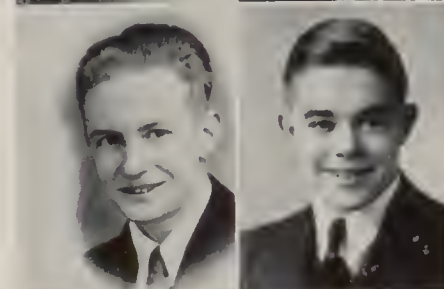
ISABEL MARNEY
Bancroft
 Girls' League

HELEN KELLY
Longfellow
 Rest Room
 Handy Andy
 Tutor



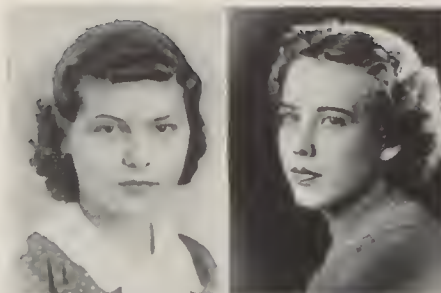
HARRY MILLER
Hamilton
 Boys' Federation

WARREN KOHLER
Hamilton
 Spanish Club
 Cosmic Club

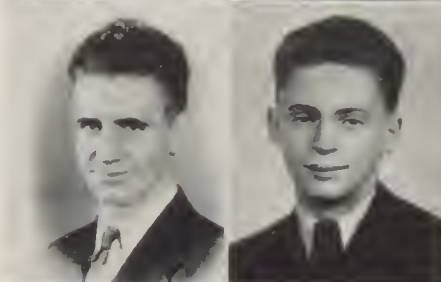


KENNETH MORS
Longfellow
 Orchestra 2-3-4
 Commercial

EDNA NELSON
Green Bluff
 Tutor 2
 Las Gitanas Charter Member 2
 Cosmic Club 3-4
 Cosmic Club Secretary 4
 French Club 3-4
 G. A. C. 4
 Baseball 2-3-4
 Basketball 2-3-4
 Volleyball 2-3-4
 Champion Volleyball Team 3
 Tumhling 3
 Big Sister 3-4



WALTER PEER
Columbia
 Math Club
 Vice President Spanish Club
 Cosmic Club



KENNETH RANDOLPH
Hamilton
 Baseball 1-2-3-4
 Football 2-3-4
 Golf 3-4
 Track 2-3
 Fire Squad 4
 "R" Club 3-4
 Harding Debate 4
 "Chimes of Normandie"
 Rogers Service Club 4
 Yell Leader 1



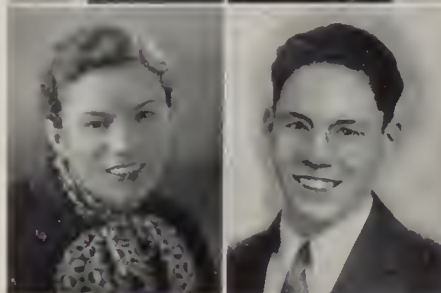
MARJORIE REYNOLDS
Regal
 Volleyball 2-3-4
 Basketball 1-2-3-4
 Baseball 1-2-3-4
 "Two Vagabonds"
 "The Lucky Jade"
 "Pickles"
 "The Buccaneers"
 Study Hall
 Handy Andy
 Room Representative
 Home Economics Club



VERNADINE RICHTER
Bemiss
 Orchestra 1-2
 Band 1-2
 9A Vice President
 9B Secretary-Treasurer
 Basketball 1-2-3
 Baseball 1-2-3
 Volleyball 1-2
 German Club
 President of German Club
 Rogers Service Club
 Big Sister
 Cashier Cafeteria and Candy
 Counter
 Study Hall and Cafeteria
 Checker
 Girls' League Honor Roll 1-2



LEONA ROBERTSON
Beeler High
 Girls' League



VERLAINE SALE
Bemiss
 Band 1-2-3-4
 Orchestra 1
 Glee Club 1-2
 "The Chimes of Normandie"
 Rogers Service Club

MAURICE SCHUEDEL
Longfellow
 Boys' Federation
 Gym Office 3

HELEN SHAW
Regal
 President G. A. C.
 Treasurer G. A. C.
 Vice President German Club
 Cosmic Club
 Baseball 1-2-3-4
 Basketball 1-2-3-4
 Volleyball 2-3-4
 Big Sister
 Annual Staff
 Record Staff
 Girls' League Honor Roll 1-2-3

BLANCHE SHIOSAKI
Regal
 Quill and Scroll 3
 Secretary Quill and Scroll 4
 Record Staff 3
 Treasure Chest 4
 Literary Editor Girls' League
 "Gossip"
 Cosmic Club
 Chairman Puppet Committee 3
 Chairman Social Service
 Basketball 3
 Girls' League Honor Roll
 Girls' League Council

CARMINE SURIANO
Columbia
 Boys' Federation
 Vice President Boys' Federation
 President 11A Class
 Football 3-4
 "R" Club
 Cosmic Club 3-4
 Harding Debate
 National Honor Society

FRANK THIRY
Columbia
 Math Club
 German Club
 Tennis 4
 National Honor Society
 Student Council
 Baseball Manager
 Valedictorian

LILY THOMPSON
Columbia
Spanish Club 2-3-4
Las Gitanas 2-3
President of Las Gitanas 3
Volleyball 1-2
Baseball 1
Tumbling 1
Basketry Chairman 4



MYRTLE WHITE
Deer Park High
Senior Honor Roll
Big Sister 3-4
Record Staff
Annual Staff
Girls' League Honor Roll

ELIN VALSVIG
Whitman
Baseball 2
Basketball 1-2
Volleyball 1-2
Secretary Sophomore Class
Rogers Service Club
National Honor Society
Salutatorian



EUNICE WILSON
Bemiss
Senior Honor Roll
Big Sister
Secretary Girls' League
Record Staff
Cosmic Club
Spanish Club
G. A. C.
Quill and Scroll
President Senior Home Room
Baseball 1-2-3-4
Basketball 1-2-3-4
Volleyball 1-2-3-4
Student Council Representative
Girls' League Council
Girls' League Honor Roll
Pirette

NORMA WALLER
North Central
Pirate Girl 3-4
Harding Debate Club 1-2



RENA ZINKGRAF
Bemiss
Girls' League

JANUARY CLASS HISTORY

Four years ago ninety very frightened freshmen entered Rogers. Soon the class was settled and some of the members made themselves known.

The first semester Glen Chambers, Lelia Jones, Henry Sweet, Wilbur Johnson and Leonard Cottrell made themselves known as president, vice president, secretary-treasurer, student council representative, and yell leader, respectively.

In the 9A year Amadee Gendreaux was president; Vernadine Richter, vice president; Bob Berg, secretary-treasurer; Donald Gardner, student council representative; and Carroll Vermillion, yell leader.

As sophomore B's, Lorraine Felber as president; Bob Berg as vice-president, Elin Valsvig as secretary-treasurer; Aliee Hale as student council representative; and Henry Sweet as yell leader, distinguished themselves.

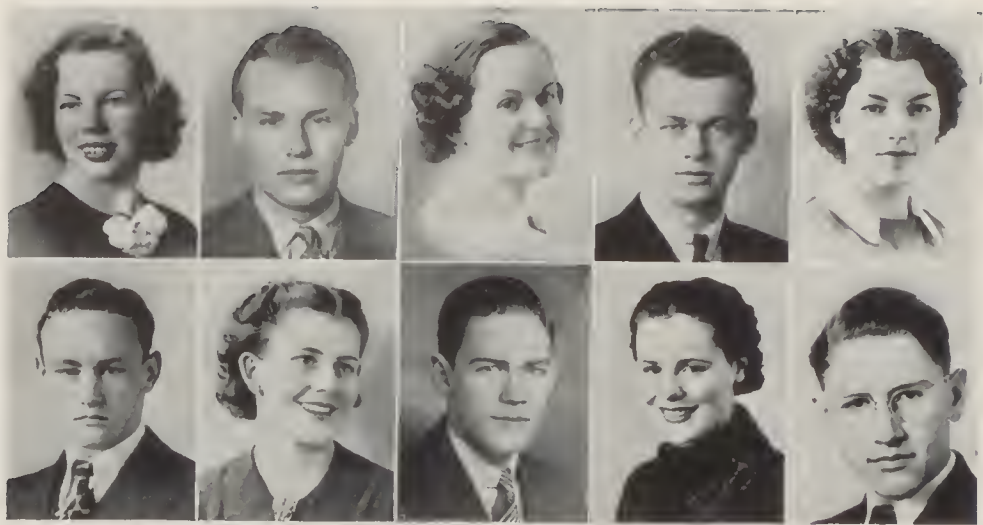
10A leaders were Lelia Jones, president; Mildred French, vice-president; Irene Corkrum, secretary-treasurer; Bill Campbell, student council representative; and Eugene Bysegger, yell leader.

Henry Sweet, president; Walter Peer, vice-president; Irene Corkrum, secretary-treasurer; Frank Thiry, student council representative; and Bob Berg, yell leader, became the officers of the 11B class.

In the 11A semester Carmine Suriano became president; Juanita Hopkins, vice-president; Lucille Huntley, secretary-treasurer; Glen Chambers, student council representative; and Ray Oswald, yell leader.

As 12B's Lucille Huntley became president; Warren Kohler, vice-president; Vernadine Richter, secretary-treasurer; Gene Tesdahl, yell leader; and Eunice Wilson, student council representative.

Senior A offices were attained by Art Hughes as president; Forrest Bishop, vice-president; and Stuart Davis, secretary-treasurer.



WALKER
BALCH

WALLACE
JOHNSON

RENFRO
HAYES

KEELER
ELLER

BATEMAN
WEAVER

JUNE SENIOR LEADERS

Frances Walker	Artist
Don Balch	Athlete
Marian Renfro	Girls' League
Norris Keeler	Journalist
Thelma Bateman	Scholar
Bob Weaver	Boys' Federation
Denise Johnson	Girls' Sports
Lorn Wallace	Class Prexy
Marialese Eller	Drum Major
Dick Hayes	Dramatist

JUNE SENIOR HONOR ROLL

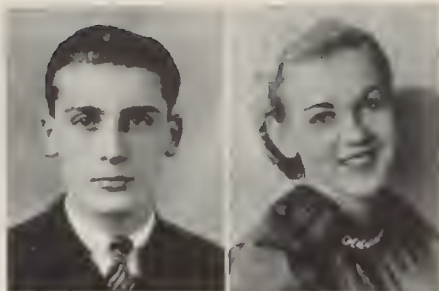
Frances Walker
Thelma Bateman
Jane Connor
Ira Glass
Esther Johnson
Marian Renfro
Elsie Zerbst
Katherine Fahey
Glen Chambers
John Ortner
Mary Kathryn True
Virginia Frye

Marguerite Gerkenmeyer
Gladys Widner
Jack Meyer
Lorn Wallace
Cletus Morrow
Curtis Tang
Florence Brennan
Kenneth Knowlton
Mildred Strand
Dorothy Cooney
Leonard Thompson
Mabel Turner

Juanita Barth
June McDonald
Fred Homad
Alma Ramey
Kathryn McDougall
Doris Hoffman
John Brownell
Josephine Block
Jack Eachon
Alfred Hill
Truman West
Bette Wood

FRED ADAMS
Whitman
Room Representative
Class Yell Leader 1-3
"R" Club 2-3-4
Math Club 2-3-4
"C" Club
Tennis 2-3-4
Football Manager 3
Basketball 1-2-3

Bud



DORIS ANDERSON
Bemiss
Rogers Service Club
Basketball 1-2
Volleyball 1-2
Baseball 1-2
Girls' League Room Representative 4

Dorrie

ALICE ALLEN
St. Joseph's
Girls' League

Al

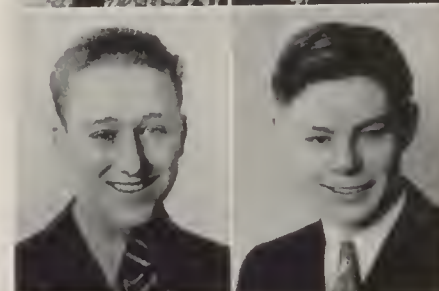


DON BALCH
Longfellow
President Boys' Federation 4
Home Room President 4
Art Club 3-4
"R" Club 3-4
Football 1-2-3-4
Track 1-2-3-4
Basketball 1-2-3-4
Record Staff 4
Annual Staff 4
Winner Ticket Selling Contest "The Showoff"

Don

GLEN ALLISON
Arlington
Hall Patrol
Paddle Squad

Glen



BILL BANGS
Longfellow
Art Club 2
Band 1-2-3
Record Staff 4
Annual Staff 4

Bill

NAOMI JANE ALLISON
Pullman High
Junior Dramatic Club 2
Harding Debate Club 3-4
"Pickles"
Chairman Singing Group
Annual Staff
Rogers News Announcer
(KFPY)

Fizz

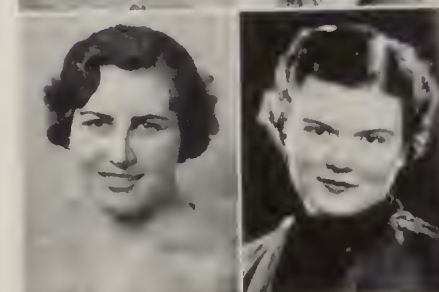


JUANITA BARTH
Hamilton
National Honor Society
Corresponding Secretary
French Club 3
Four Star Club 4
Harding Debate Club 3-4
French Club 3-4
Baseball 1-2
Volleyball 1-2
Basketball 1-2-3
Big Sister 3-4
Chairman Big Sister Department 4
Girls' League Honor Roll
1-2-3-4
Girls' League Council 4
Annual Staff 4
Record Staff 4
Quill and Scroll 4
Glee Club
"Pickles"
Senior Honor Roll

Neta

EDITH ALTVATER
Bemiss
Girls' League

Eda

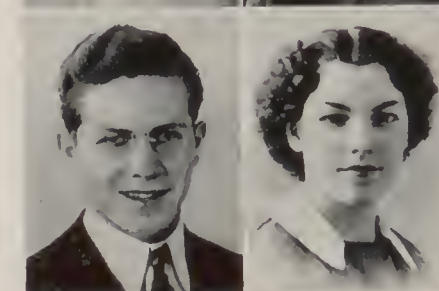


THELMA BATEMAN
Bemiss
National Honor Society 4
Rogers Service Club
President Freshman B Class
President Student Council 2
Treasurer Girls' League 3
Secretary "C" Club 3
Student Council Representative 3-4
Vice President Student Council 4
Las Gitanas 2
Home Economics 2-3-4
"C" Club 3
Tennis 3-4
Volleyball 1-2-3
Basketball 1-2-3
Baseball 1-2-3
Tumbling 2
Big Sister 3
Girls' League Council 3
Student Council 2-3-4
Room Representative 2-4
Record Staff 4
Annual Staff 4
Senior Honor Roll

Thelma

CLARENCE ANDERSON
Cooper
Rogers Service Club
"R" Club 3-4
Football 1-2-3-4
Track 1-2-3-4
Basketball 1-2-3

Andy

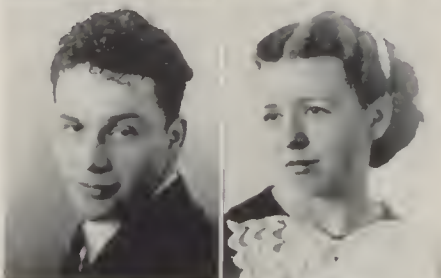


MARGARET BEEDLE *Margie*
Hamilton
Spanish Club 4



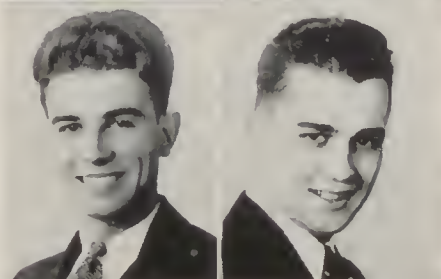
GLADYS BONSER *Gladie*
Marycliff
Chairman First Aid
Weighing and Measuring Department
"C" Club 3-4

CLYDE BEMIS *Bemo*
Whitman
Secretary Math Club
President Math Club 4
Football 3-4
Track 3
Record Staff 4
Fire Squad 3-4
Annual Staff 4



FLORENCE BRENNAN *Det*
Butte High
Girls' League Room Representative
Senior Honor Roll

RALPH BENTZ *Tuffy*
Cooper
Track 3
Annual Staff 4
Record Staff 4



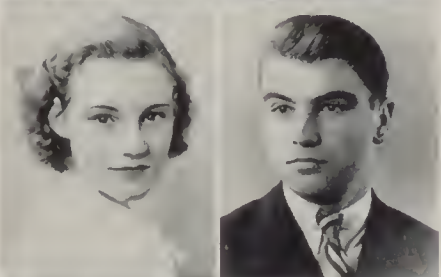
CLIFFORD BROWN *Cliff*
Arlington
President Cosmic Club 4
German Club 1-2
Harding Debate Club 4
Track 1-2
Orchestra 1-2

JOSEPHINE BLOCK *Jo*
Whitman
President German Club 3
Chairman Honor Roll Department
German Club 2-3-4
Cosmic Club 4
Big Sister 3
Girls' League Honor Roll
Scholastic Honor Roll



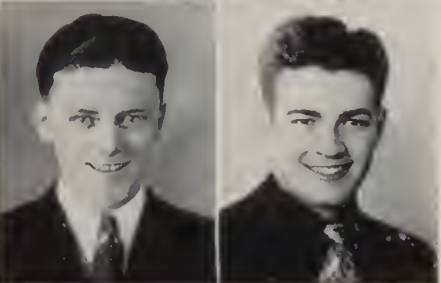
JULIA BROWN *Jul*
Arlington
Quill and Scroll 4
Secretary Home Economics Club
President Home Economics Club 4
Vice President G. A. C 4
President Quill and Scroll 4
Home Economics Club 2-3-4
G. A. C 4
Volleyball 1-2-4
Baseball 1-2-4
Champion Basketball Team
Basketball 1-2-3-4
Tumbling 2
Tumbling Manager 4
Basketball Referee 4
Room Representative 2-4
Chairman Vocational Department 4
Girls' League Council 4
Record Staff 4
Annual Staff 4
Secretary-Treasurer of Senior A Class

JEANNE BLODGETT *Jinny*
Longfellow
Spanish Club 4
German Club 3
Volleyball 1
Basketball 1
Room Representative 1



JOHN BROWNELL *Brownie*
Longfellow
National Honor Society
Secretary-Treasurer Math Club 3-4
Tutoring Committee 4
Christmas Committee 4
Montero Club 3-4
Math Club 3-4
German Club 2-3
Football 4
Baseball 3-4
B Squad 3
Sergeant at Arms Math Club
Hi-Y Club 3-4
Senior Honor Roll

LEONARD BOGENREIF *Boge*
Hamilton
Rogers Service Club
Tennis 2-3-4
Room Representative 3
Annual Staff 4
Record Staff 4



FORREST BURGESS *Forrie*
Whitman
Class President 2
Art Club President 4
Art Club 1-2-3-4
Cosmic Club 4
Football 1
Student Council 2

MARY BURKHARDT *Bucket*
Longfellow
 Treasurer G. A. C. 4
 Cosmic Club 3-4
 German Club 2
 G. A. C. 3-4
 Volleyball 1-2-3-4
 Tumbling 1-2-3-4
 Basketball 1-2-3-4
 Baseball 1-2-3-4
 Cub Edition Staff

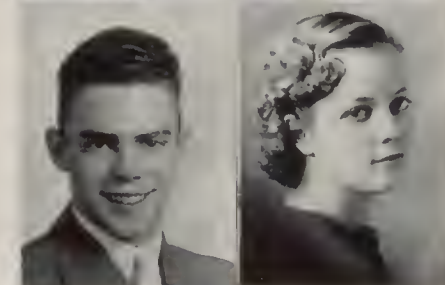
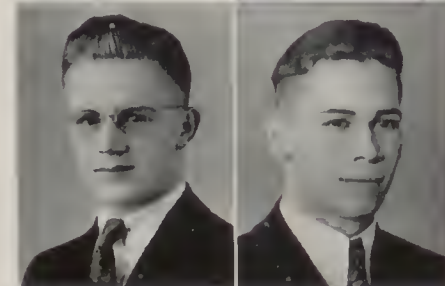
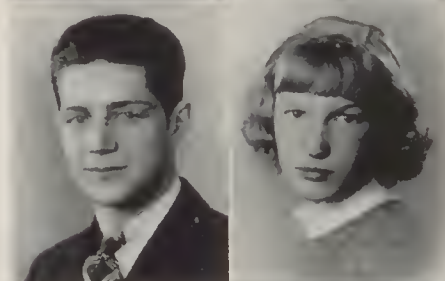
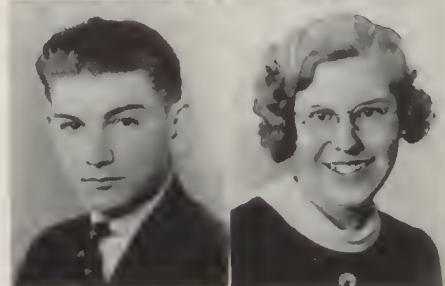
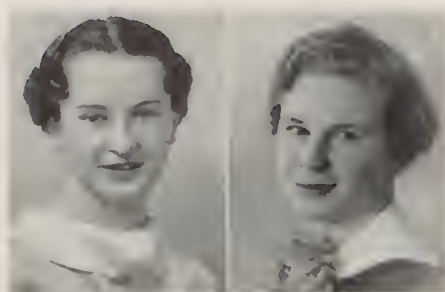
STEWART BURKHART *Stu*
Longfellow
 Rogers Service Club
 Hall Patrol
 Paddle Squad

KLITH CAMPBELL *Keith*
Hamilton
 Winner Extemporaneous
 Speaking Contest 4
 Rogers Service Club
 Quill and Scroll 3-4
 Treasurer Quill and Scroll 4
 Harding Debate Club 2-3
 Footlights 4
 Band 3-4
 Orchestra 3-4
 Debate 2-3-4
 Record Staff 3
 Paddle Squad 2
 Yell Duke 2-3
 "Pickles" 3
 News Announcer 3
 Fire Prevention Speaker 4
 Radio Citizenship Speaker 4
 Spring Queen Manager 3

AMELIA CANDLERO *Melia*
Holy Names Academy
 "R" Club 3-4
 Tennis 1-2-3-4
 Big Sister 3-4
 Tutor 1-4

ERIC CARLSON *Blondie*
Whitman
 German Club 3-4
 Junior Dramatic Club 1-2
 Footlights 3-4
 Baseball 1
 Hall Patrol 3

GLEN A. CHAMBERS *Bud*
Bemis
 Rogers Service Club 4
 Fire Squad 4
 Quill and Scroll 4
 Class President 1
 President Montero Club 3-4
 Vice President Junior Dramatic 2
 Sergeant at arms Junior Dramatic 2
 Junior Dramatic Club 1-2
 Spanish Club 2-3
 Footlights 3-4
 Chairman Entertainment Department
 Montero 2-3-4
 Annual Editor 4
 Record Staff 4
 "Arms and the Man" 2
 "Mr. Pom Passes By" Assistant Director 3
 "The Whole Town's Talking" Business Manager 4
 "The Show-off" 4
 "The Lucky Jade" 2
 Student Council 1-3-4
 Senior Honor Roll



JANE CONNOR *Peter*
Millwood
 Rogers Service Club
 National Honor Society 3-4
 Record Staff 4
 Girls' League Council 4
 Editor Girls' League "Gossip" 4
 Tutor 1-2-4
 Big Sister 3-4
 Hall Patrol
 Senior Honor Roll

DOROTHY COONEY *Dorh*
Hamilton
 National Honor Society
 Rogers Service Club 2-3-4
 Quill and Scroll 3-4
 Corresponding Secretary Quill and Scroll 3
 Treasurer German Club 4
 Four Star Club 2-3-4
 German Club 3-4
 Volleyball 1-2-3-4
 Champion Basketball Team
 Basketball 1-2-3-4
 Tumbling 1-2
 Baseball 1-2
 Big Sister 3-4
 Orchestra 2-4
 Record Staff 3-4
 Hall Patrol 3
 Annual Staff 3
 Senior Honor Roll

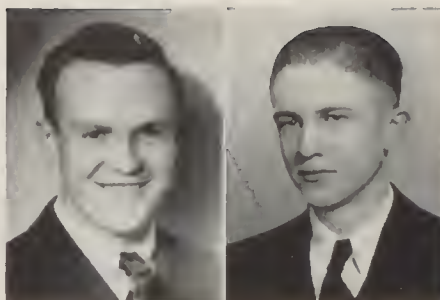
MARIAN COX *Mary*
Havermale
 Rogers Service Club
 Home Economics Club 4
 Handy Andy 2
 Library Assistant 2-3-4
 Girls' League Honor Roll

OSCAR CRAIN *Ocker*
Whitman
 Officer 11A Class
 "C" Club 4
 Harding Debate Club 4
 Track 1-3-4
 Football 1-2-3-4
 Baseball 1-2
 Sergeant at Arms of Boys' Federation 3
 Fire Squad
 Student Council
 Boys' Federation Conduct Board

RAYMOND CREED *Ray*
Longfellow
 Rogers Service Club
 Art Club 4
 Stage Crew Manager 3
 Stage Crew 3-4
 Orchestra 1-2-3-4

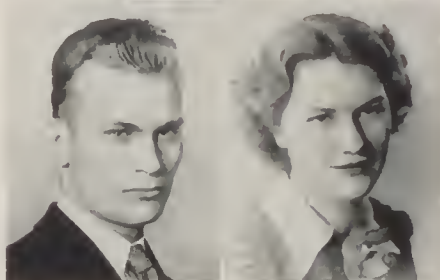
DORIS CULVERWELL *Dode*
Arlington
 Secretary Home Economics Club 3
 Sergeant at Arms Home Economics Club 4
 Secretary and Treasurer Class 3
 Home Economics Club 3-4
 Baseball 1-2-3
 Volleyball 1-2-3
 Captain Basketball 3
 Basketball 1-2-3
 Tumbling 2-3
 Record Staff 4
 Annual Staff 4
 Handy Andy 2
 Nurse's Office
 Room Representative 4
 Girls' League Honor Roll 2-3
 Honor Roll 1-2

JIM DAVIS *Dopey*
Whitman
 Secretary Sophomore Class
 "C" Club 4
 "R" Club 3-4
 Math Club 3-4
 Football 3-4
 Track 1
 Tennis 2-3-4
 Record Staff 4
 Fire Squad Chief 4
 Vice President 11A Class
 Fire Squad 3-4
 Annual Staff 4



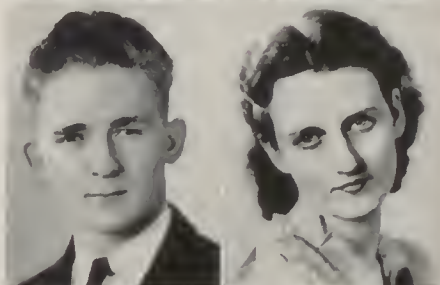
VERNON ENGERBRETON *Vern*
Cooper
 Track 1-2-3-4
 Annual Staff 4

EUGENE DEROMEDI *Gene*
Arlington
 Cosmic Club Sergeant at
 Arms 4
 Cosmic Club 3-4
 Art Club 4
 Harding Debate Club 3-4
 Annual Staff 4
 Record Staff 4



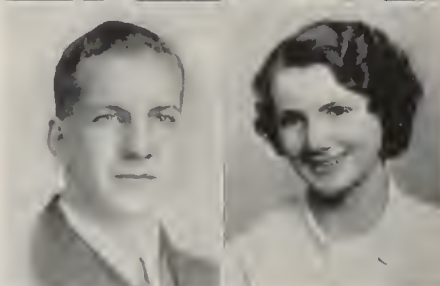
KATHERINE FAHEY *Kay*
Marycliff
 National Honor Society
 Cosmic Club 4
 Math Club 3
 Baseball 2-3-4
 Champion Basketball Team
 Basketball 3-4
 Tumbling 3-4
 Swimming 4
 Volleyball 3-4
 Room Representative 3
 Girls' League "Gossip" Staff 4
 "Pickles" 3
 Senior Honor Roll

MAYNARD DETMER *Doc*
Bemiss
 "Lucky Jade" 2
 "Buccaneers" 4
 "Pickles" 3
 "The Showoff" 4
 Glee Club 2-3-4



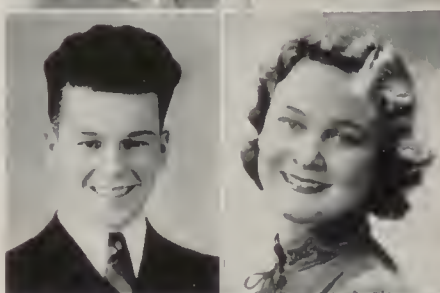
DORIS FALT *Dode*
Arlington
 Rogers Service Club 4
 Secretary Social Service 4
 Basketball 1-2
 Baseball 1-2
 Volleyball 1-2
 Tumbling 1
 Record Staff 4
 Annual Staff 4
 Room Representative 1-3
 Hall Patrol 4
 Gym Office 2-3
 Handy Andy 2-3
 Honor Roll 1-2

RAY DILLON *Hack*
St. Patrick's
 Boys' Federation



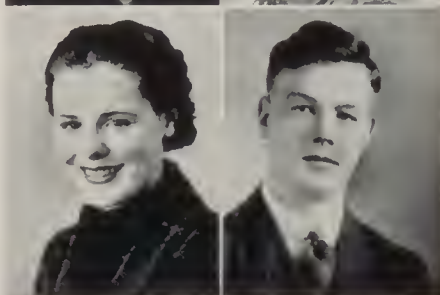
LUCILLE FISCHER *Lucy*
West Valley
 Volleyball
 Basketball
 Girls' League Entertainment

JACK EACHON *Jack*
Whitman
 National Honor Society
 Fire Squad 4
 Hall Patrol 2
 Vice President 9B Class
 Vice President 10A Class
 Secretary-Treasurer 11B Class
 Vice President 12A Class
 Montero Club 2-3-4
 "R" Club 3-4
 "C" Club 4
 Baseball 1-2-3-4
 Track 1
 Production Manager "Show-
 off" 4
 Senior Honor Roll



VIRGINIA FRYE *'Gin*
Cle Elum High
 "C" Club 3-4
 Tumbling 2
 Annual Staff 4
 Hall Patrol 3-4
 Big Sister 4
 Nurse's Office 3
 President Senior A Home
 Room 4
 Senior Honor Roll

MARIALESE ELLER *Marcy*
Hamilton
 Vice President Harding Debate
 Club 4
 Secretary-Treasurer Cosmic
 Club 4
 Harding Debate Club 3-4
 Cosmic Club 3-4
 Basketball 1-2-3
 Baseball 1-2-3-4
 Volleyball 1-2
 Song Leader 3-4
 Baseball Captain 3
 Drum Major 4
 Girls' League Honor Roll



ROBERT GEISLER *Bob*
Logan
 Harding Debate Club 3-4
 Boys' Federation

MARGUERITE GERKENSMEYER

Bemiss
Office 3-4
Big Sister
Tutor
Study Hall Checker
Chairman Invitation Committee
Honor Roll
Stenographer for Mr. Meyer
Senior Honor Roll



THELMA HERBERT
Lewis and Clark
Glee Club
Crocheting Committee
Weighing and Measuring Committee 3

VIOLA GETMAN

Longfellow
Vice President: Harding Debate Club 3
Secretary-Treasurer Junior Dramatic Club
Junior Dramatic Club 1-2
Harding Debate Club 3-4
Room Representative 1
Study Hall Checker 2
Main Office Worker

Vi

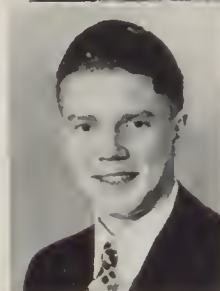


ALFRED HILL
Worley, Idaho
Basketball 4
Track 4
Boys' Federation
Senior Honor Roll

IRA GLASS

Regal
Rogers Service Club
National Honor Society 4
President Art Club 3
President Harding Debate Club 4
Secretary Boys' Federation 4
Secretary "R" Club
Art Club 2-3
Harding Debate Club 3-4
Montero 2-3-4
Cosmic Club 4
"R" Club 3-4
Football 2-3-4
Track 3-4
Stage Crew 1-2-3-4
Stage Crew Manager 3
Vice President 11B Class
Annual Staff 4
Senior Honor Roll

Junior



DORIS HOFFMAN
Medical Lake High
Girls' League "Gossip Staff" 4
Senior Honor Roll

DOROTHY HELEN GUMP

Longfellow
French Club 2-3-4
Girls' League "Gossip" 4
Record Staff 4
Annual Staff 4

Dot



WALTER HOLLEY
Vancouver High
Math Club 4
Football 3-4
Track 3
Fire Squad 4

MILDRED HANSON

Whitman
Rogers Service Club
"C" Club 3-4
Baseball 1-2
Volleyball 3
Basketball 1-2
Chairman Public Utilities Department 4
Hall Patrol 3-4
Nurse's Office 3
Handy Andy 2
Room Representative 3
Girls' League Council 4

Milly

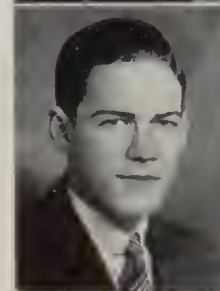


FRED HOMAD
North Central
National Honor Society 4
Vice President Radio Club 4
Cosmic Club 4
"R" Club 2-3-4
Basketball 2
Band 2-3-4
Track 2-3-4
Senior Honor Roll

RICHARD G. HAYES

St. Aloysius
Rogers Service Club 3-4
President Footlights Club
Footlights 2-3-4
Annual Staff
"Ghost Train"
"Mr. Pim Passes By" 3
"The Whole Town's Talking" 4
"The Showoff" 4
"Buccaneers" 4
Record Staff 4
Spring Sports Queen Manager 3
Field Announcer at Track and Football Games 3-4
Chairman Dramatic Department of Boys' Federation
Glee Club 3-4
Track
Fire Squad 3

Dick



LEAH JAUQUES
Bemiss
French Club 3
Basketball 1
Pirate Girl 3
Handy Andy 1
Gym Office 2

Leah

AL JOHNSTON
Whitman
Boys' Federation

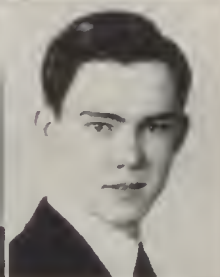
41



EVA KIRK
Bemiss
"C" Club 3-4
Tumbling 2-3
Annual Staff 4
Handy Andy 1-2

Kirkie

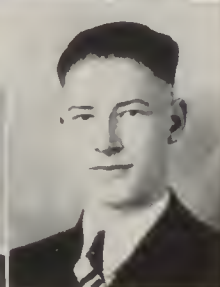
DENISE JOHNSON
Central Valley
Home Economics Club Secretary 3
Home Economics Club President 4
G. A. C. 4
Harding Debate Club 4
Cosmic Club 3-4
Champion Basketball Team
Basketball 2-3-4
Baseball 2-3-4
Tumbling 2-3
Volleyball 2-3
Record Staff 4
Annual Staff 4
Handy Andy 2
Girls' League Honor Roll
Big Sister 3
"The Showoff" 4
"The Whole Town's Talking" Publicity Chairman 4



KENNETH KNOWLTON
Whitman
Class President 3
Student Council 3-4
Fire Squad 4
"R" Club 2-3-4
Junior Dramatic 2
Footlights 3-4
Montero 2-3-4
Rifle Club 4
Baseball 1-2-3-4
Football Manager 2
Music
Senior Honor Roll

Kenny

ESTHER JOHNSON
Whitman
National Honor Society
Rogers Service Club
President 10B Class
Room Representative 4
Basketball 1-2
Tumbling 1-2
Baseball 1-2
Student Council 1-4
Treasurer Girls' League 4
Girls' League Honor Roll
Big Sister 3-4
Tutor
Conduct Board
Girls' League Council
Chairman Inter-School Relation Committee
Scholastic Honor Roll 1-2-3-4
Senior Honor Roll



IRWIN KOLBET
Moggan, Colorado
Track Manager
Boys' Federation

Shotgun

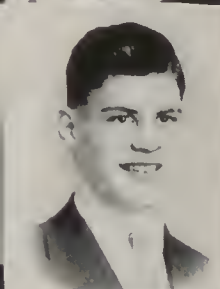
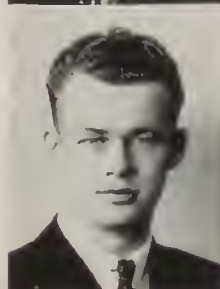
RAOUL KAUFFMAN
Bemiss
President Rifle Club 4
Footlights Club 4
Rifle Club 4
Track 1
Football 2
All-Northwest High School
Symphony 2-4
"Ghost Train" 3
"The Whole Town's Talking" 4
"The Showoff" 4



RUBY LEAF
Centerville, S. D.
Harding Debate Club 4
"C" Club 4
Pirate Girl 4
Band 2-3-4
Glee Club 3-4
"Buccaneers" 4
Dramatics Club 3

Swele

NORRIS KEELER
Regal
Cosmic Club 4
Quill and Scroll 4
Football 2-3
Track 1-2
President Handicraft Department
Record Staff 4
Assistant Editor Annual 4



HAROLD LINEBARGER
Arlington
Sergeant at Arms Cosmic Club 4
Sergeant at Arms Harding Debate Club 4
"R" Club 2-3-4
Cosmic Club 4
Harding Debate Club 3-4
Ice Ball 4
Fire Squad 4
Conduct Board Boys' Federation
Christmas Committee
Scholarship Committee Boys' Federation

Limey

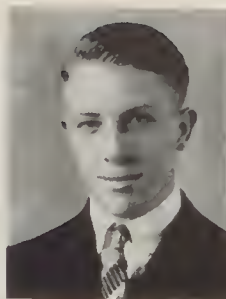
MILDRED KEIMIG
North Central
Girls' League Band and Orchestra Group
School Orchestra 4



MAE LOHLE
Bonners Ferry
Basketball 4
Girls' League

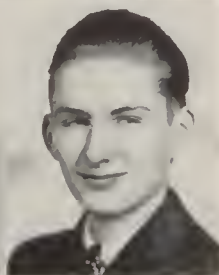
Mae

ELMER McCRAITH *Elm*
Elgin, North Dakota
 Boys' Federation



RAY MATHIS *Ray*
Whitman
 President "C" Club 4
 Quill and Scroll 4
 Fire Squad
 "C" Club 3-4
 Conduct Board
 Annual Staff 4
 Record Staff 4

JUNE McDONALD *June*
Whitman
 Harding Debate Club Secretary-Treasurer 4
 Chairman Vocational Department 4
 Sub Chairman Entertainment Department 4
 Harding Debate Club 3-4
 Photoplay 1
 Volleyball 1
 Pirate Girl 4
 Band 1-2-3-4
 Orchestra 4
 Music Librarian 3-4
 Record Staff 4
 Annual Staff 4
 Scholastic Honor Roll 4
 Girls' League Honor Roll 1-2-4
 Girls' League Pep Band 3
 Home Room President 4
 Student Council 1
 Girls' League Council 4
 Senior Honor Roll



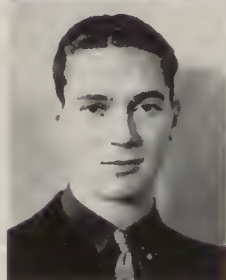
JACK MEYER *Jack*
Regal
 National Honor Society
 Footlights 3-4
 German Club 2-3
 Band 1-2-4
 Orchestra 3
 "The Whole Town's Talking" 4

KATHRYN McDOUGALL *Kayo*
St Xaviers
 Girls' Athletic Club 3-4
 Basketball 2-3-4
 Volleyball 1-2-3-4
 Baseball 1-2-3-4
 Tumbling 1-2-3
 Hall Patrol 4
 Glee Club 2
 Champion Basketball Team
 Champion Volleyball Team 4
 Senior Honor Roll



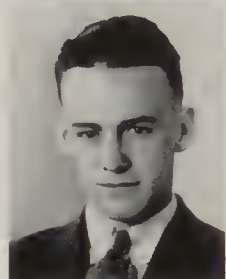
FRED MILLER *Fritz*
Regal
 "R" Club 3-4
 Fire Squad 3-4
 "C" Club 4
 Football 1-2-3-4
 Basketball 1-2-3
 Baseball 1 2-3 4

RICHARD McNAMARA *Dick*
Regal
 Vice-President Hall Patrol 3-4
 Vice-President German Club 3
 Junior Dramatics 1-2
 German Club 3-4
 Track
 Football



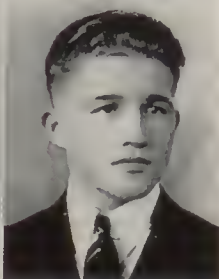
GOLDEN MILLER *Gilt*
Arlington
 Home Economics Club 4
 Basketball 2-3-4
 Captain Champion Basketball Team
 Baseball 2-3-4
 Tumbling 2-3
 Volleyball 2-3-4
 Study Hall Checker 3-4
 Annual Staff 4

PAUL MACK *Stub*
Arlington
 Basketball 3-4
 Boys' Federation
 Cub Edition Staff



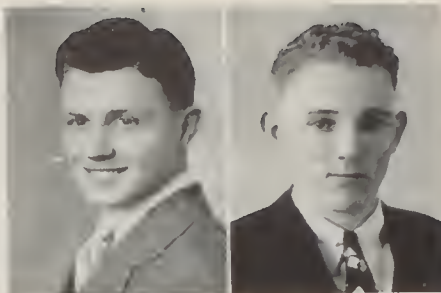
LEONORA MILLER *Leona*
Bemiss
 Girls' League

IRENE MADSEN *Boopy*
North Central
 Girls' League



CHARLES MOFFATT *Chuck*
Whitman
 Tennis 3-4
 Hall Patrol

ED MOFFATT *Eam*
Whitman
 Vice President Outdoor Life
 Sergeant at Arms Outdoor
 Life



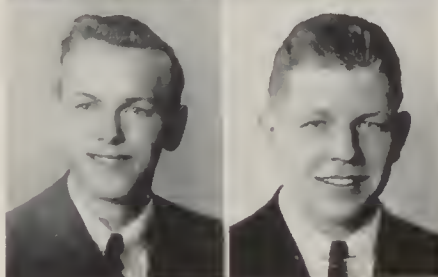
DONALD NEWTON *Don*
Hawermale
 "R" Club 2
 Golf

ANNE MOORE *Ann*
Longfellow
 Girls' League



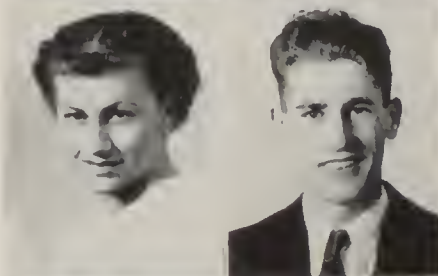
JOHN ORTNER *Johnnie*
Cooper
 Rogers Service Club
 National Honor Society 4
 President German Club 1
 President Junior Dramatics
 Club 2
 Secretary Footlights 3
 Sergeant at Arms Footlights 3
 Vice President Boys' Federa-
 tion Department 4
 Junior Dramatics Club 2
 Footlights Club 3-4
 Cosmic Club 3-4
 Debate
 Chairman of School Dances
 Senior Honor Roll

CLETUS MORROW *Pete*
Whitman
 National Honor Society
 Secretary Science Depart-
 ment Boys' Federation
 Math Club 3
 Hall Patrol
 Senior Honor Roll



IBBEY OSTNESS *Ib*
Whitman
 Sergeant at Arms German
 Club 2
 German Club 1-2
 Football 3
 Operetta 4
 Fire Squad 4

VIRGINIA MOSER
Whitman
 (Deceased)
 G. A. C. 4
 Harding Debate 3-4
 Rogers Service Club
 National Honor Society
 Big Sister Department
 Girls' League Council
 Treasurer Girls' League
 Pirate Girl 4
 Vice President Harding
 Debate 4



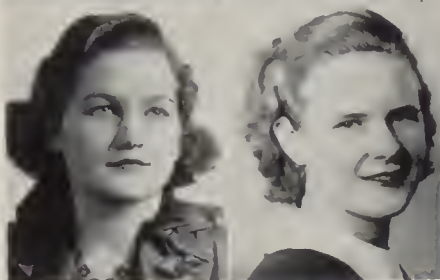
GLEN PEBLES *Lankey*
Cooper
 Class President 1
 "R" Club 3-4
 Basketball
 Track
 Record Staff 4
 Annual Staff 4

BEVERLY MUSTARD *Bet*
Whitman
 Treasurer Home Economics
 Club 3
 Vice President Home Eco-
 nomics Club 4
 Home Economics Club 2 3-4
 Girls' Athletic Club 4
 Basketball 1-2-3
 Baseball 1-2-3
 Volleyball 1-2-3
 Tumbling 2-3
 Record Staff 4
 Annual Staff 4
 Scholastic Honor Roll 1-2



HELEN PERRY *Helen*
Arlington
 Indoor Baseball 1-2
 Basketball 1-2
 Volleyball 1-2
 Record Staff 4
 Nurse's Office 4
 Annual Staff 4
 Gym Office
 Handy Andy

LORRAINE NELSON *Nels*
Whitman
 Volleyball 1-2
 Baseball 1-2
 Basketball 1-2
 Cub Edition Staff



MARGARET PIKE *Margaret*
Cheney Junior High
 Knitting Department
 Courtesy Department

VERNA PRESSLEY *Brownie*
Lewis and Clark
 Rogers Service Club
 Room Representative 3-4
 Hall Patrol 4
 Library Worker 3

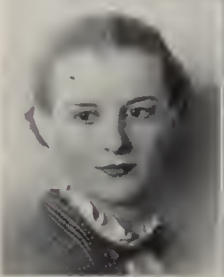
BERNEIL PRESTON *Bernie*
Hamilton
 Chairman Camp Craft 4
 G. A. C. 4
 Volleyball 4
 Baseball 4
 Basketball 2
 Tumbling 1
 Tennis 1
 Orchestra 4
 Girls' League Council
 Camp Craft

SCYNTHIA PYNE *Gertie*
Regal
 Home Economics Club
 Rogers Service Club
 "R" Club
 Captain of Champion Volleyball Team
 Basketball
 Baseball
 Champion Basketball Team
 Tumbling
 Winner Skill Test
 Tennis 2-3-4
 Intramural Tennis
 Girls' League Dramatics Department
 Tutor
 Study Hall Checker 4

BOR RALSTON *Rusty*
Havermale
 Rogers Service Club
 Hall Patrol
 Art Club 3-4
 Beginner's Band
 Stage Crew
 Yell Leader

ALMA RAMEY *Ramie*
Bemiss
 9A Class President 1
 G. A. C. President 4
 G. A. C. 3-4
 Harding Debate Club 3-4
 Basketball 2-3-4
 Volleyball 1-2-3-4
 Baseball 1-2-3-4
 Tumbling 1-4
 Champion Basketball Team
 3½ Year Graduate
 Record Staff 4
 Annual Staff 4
 Student Council 1-4
 Chairman of Dance Committee
 Handy Andy 2-3
 Honor Roll 1-3-4
 Las Gitanas 1-2
 Senior Honor Roll

MARIAN RENFRO *Renny*
Whitman
 National Honor Society
 President Girls' League 4
 President Home Economics 3
 President French Club 3-4
 Treasurer Home Economics Club 4
 Secretary-Treasurer Home Economics Club 1
 Home Economics Club 2-3-4
 French Club 3-4
 Harding Debate Club Honorary Member
 Volleyball 1-2-3
 Basketball 1-2
 Baseball 1-2-3
 Tumbling 1-2
 Championship Debate Team 4
 Girls' League Honor Roll 1-2-3-4
 Big Sister 1-2-3
 Tutor
 Student Council 4
 Girls' League Conduct Board 4
 Girls' League Council 4
 Senior Honor Roll



MAXINE RINEAR *Macky*
Regal
 Vice President Girls' League 4
 President Four Star Club 4
 Vice President Home Economics Club 4
 Vice President Four Star Club 3
 Home Economics Club 3-4
 Four Star Club 2-3-4
 G. A. C. 4
 Baseball 1-2-3-4
 Basketball 1-2-3-4
 Volleyball 1-3-4
 Tumbling 1-2
 Captain Volleyball 2
 Champion Volleyball Team 4
 Big Sister 4
 Tutoring 1
 Handy Andy 1-2-3
 Champion Basketball Team 4
 Room Representative 3
 Girls' League Honor Roll
 Vice-President Girls' League

VIRGINIA RIZZUTO *Gin*
Arlington
 Secretary Public Utility Department 3
 Basketball 1-2
 Baseball 1-2
 Volleyball 1-2
 Record Staff 4
 Annual Staff 4
 Girls' League "Gossip" Staff 4
 Hall Patrol 4
 Honor Roll 1-4
 Nurse's Office 2-3
 Tutor 1
 Gym Office 2
 Girls' League Honor Roll 1-2-3-4
 120 Word Shorthand Pin

FRANCES ROGERS *Franny*
Logan
 "C" Club 3
 Handy Andy 2
 Scrapbook Committee 1

PHYLLIS ALBERTA ROUSE *Phyl*
Latah
 Basketball
 Volleyball
 Tennis

HARVEY RYAN *Harve*
Hamilton
 Baseball 1-2-3
 Orchestra
 Assistant Director "Show-off" 4
 Fire Squad
 Chairman Entertainment Department Boys' Federation
 Cub Edition Staff

ZENIS RYAN *Cookie*
Whitman
 Junior Dramatic Club 1
 Spanish Club 3
 Four Star Club 4
 Basketball 1-2
 Baseball 2
 Volleyball 1

BOB SANDERS *Bob*
North Central
 "C" Club 3
 Glee Club 1-2-3-4
 Record Staff 4
 Annual Staff 4
 "The Lucky Jade" 2
 "Pickles" 3
 "Buccaneers" 4
 Honor Roll 2



LOUISE STONE *Mickey*
Longfellow
 Chairman Hiking Committee



MYRTLE SCHALIKE *Myrt*
Regal
 Rogers Service Club
 Volleyball 2-4
 Chairman Dramatics Group of
 Girls' League
 Chairman Embroidery Group
 of Girls' League



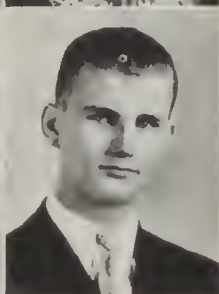
MILDRED STRAND *Milly*
Whitman
 G. A. C.
 Baseball 1-2-3-4
 Volleyball 1-2-3-4
 Basketball 2-3-4
 3½ Year Graduate
 Band
 Big Sister
 Handy Andy
 Gym Office
 Senior Honor Roll



GERALDINE SHAW *Jerry*
Regal
 Rogers Service Club
 Nurse's Office 4
 Hall Patrol 4
 Annual Staff 4



CURTIS TANG *Curt*
Williston, N. D.
 National Honor Society
 Footlights Club
 "R" Club
 Vice President Boys' Federa-
 tion
 Basketball 3-4
 Baseball 3-4
 Band 3-4
 Footlights Orchestra
 Senior Honor Roll



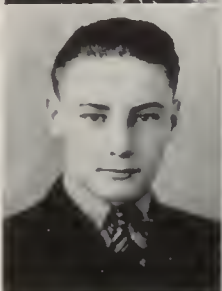
BOB SHULKIN *Bob*
Marshall Junior High
 Vice President Rifle Club
 Secretary Rifle Club 4
 Cosmic Club 4
 Rifle Club 4
 Montero Club 2-3-4
 Baseball 2-3-4
 Student Council 4
 Record Staff 3



TRUDA TAVARES *Trude*
Bemis
 Record Staff 3-4
 Annual Staff 4
 Hall Patrol
 Quill and Scroll 4



JOHN SIGMON *Johnny*
Bemis
 Boys' Federation



LEONARD THOMPSON *Thomps*
Whitman
 National Honor Society
 Rogers Service Club
 Sergeant at Arms Junior
 Dramatic Club
 Secretary Hall Patrol
 Vice President Hall Patrol
 President Hall Patrol
 Four Star Club
 German Club 3-4
 "R" Club 3-4
 Rifle Club 4
 Tennis 3-4
 Boys' Federation Project
 Committee 3
 Paddle Squad
 Senior Honor Roll



VIRGINIA SMITHWICK *Ginger*
Lewis and Clark
 Cosmic Club 4
 Girls' League



NORMAN THOMPSON *Norm*
Regal
 Quill and Scroll 4
 President Rifle Club 3
 Cosmic Club 4
 Footlights Club 3-4
 Paddle Squad 2-3
 Track 1-2
 Basketball 1-2
 Record Staff 4
 Annual Staff 4
 "Ghost Train" 3
 Fire Squad 4
 Room Representative 3



TALROTT TRIPP

Tal

Bemiss

Baseball 1
Tennis 4
Basketball 1
Record Staff 4
Annual Staff 4

MARY KATHRYN TRUE *Kach**Regal*

National Honor Society
President German Club 4
Vice President 9A Class
Chairman Tutoring Committee 4
Four Star Club 2-3
German Club 3-4
Girls' League Honor Roll
G. A. C. 4
Volleyball 1-2-3-4
Champion Basketball Team
Basketball 1-2-3-4
Baseball 1-2-3-4
Tumbling 1-2
Big Sister 3-4
Record Staff 4
Handy Andy 1-2
Cub Edition
Annual Staff 4
Tutoring 1-4
Room Representative 2-4
Senior Honor Roll

MABEL TURNER *Maybelle**Bemiss*

Secretary German Club 4
Spanish Club 2-3-4
German Club 3-4
Big Sister
Hall Patrol
Senior Honor Roll

LOUIS VENTIMIGLIO *L'enti**Gonzaga*

"C" Club President 3
Harding Debate Club 4
Basketball 4
Baseball 4
All School Play Assistant
Director
Annual Staff
Operetta
Cub Edition Staff

MARCIA VINCENT

Pat

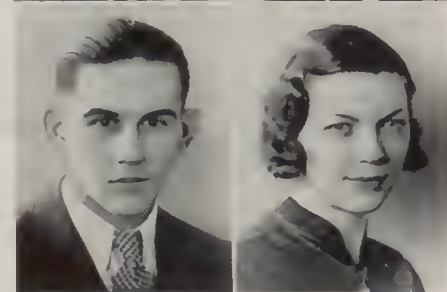
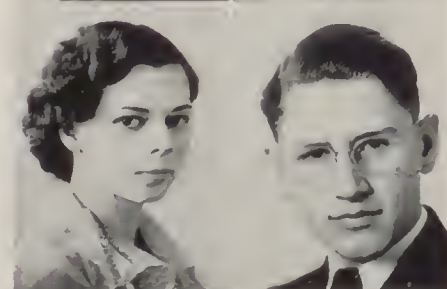
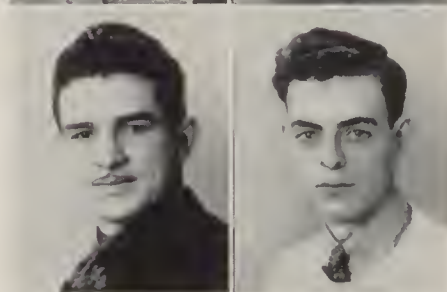
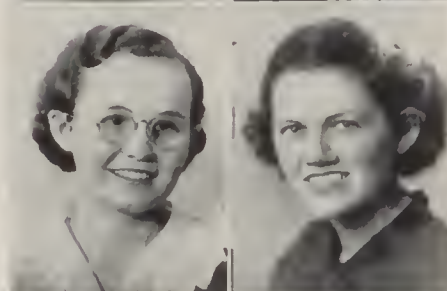
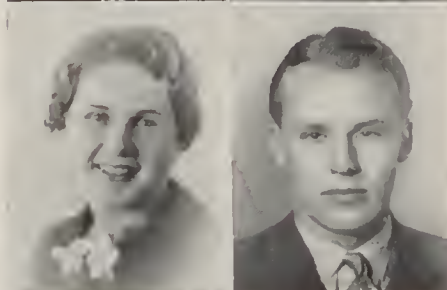
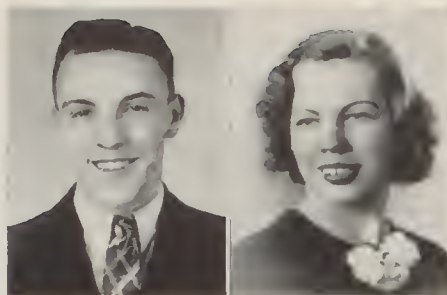
Kennewick

Footlights 4
Girls' Glee Club 1-2-3-4
Girls' Sextette 2-3
Operetta 2-3

LLOYD WALCH *North Central*

Lloyd

Boys' Federation

FRANCES WALKER *Franny**John Burroughs Junior High*

Rogers Service Club
National Honor Society 4
President Art Club 4
Secretary-Treasurer French Club 3
Vice President Art Club 3
Manager Paint Crew 3-4
French Club 2-3-4
Art Club 2-3-4
Stage Crew 2-3-4
Scholastic Honor Roll 1-2-3-4
Cafeteria Worker
Senior Honor Roll

LORN WALLACE *Bum**Regal*

National Honor Society
Rogers Service Club
Vice President Footlights Club 3
President Footlights Club 4
Secretary-Treasurer Art Club 3
Secretary Montero Club 4
Senior Class President
Art Club 2-3-4
Footlights Club 3-4
Montero 2-3-4
Rogers Service Club 4
"R" Club 3-4
Tennis 3-4
Student Council 4
Stage Crew 1-2-3-4
Art Editor Annual 4
Senior Honor Roll

RUTH WALLACE *Blackie**Longfellow*

Rogers Service Club
Reporter French Club 3
Cosmic Club 3-4
French Club 2-3-4
Room Representative
Study Hall Worker

DALE WATSON *Clark**Salem High*

Rogers Service Club
Basketball Manager 4
"R" Club 3-4
"C" Club 4

ROBERT WEAVER *Bob**Whitman*

Rogers Service Club 2-3-4
Fire Squad 3-4
Sergeant at Arms of Boys' Federation 3
Secretary Boys' Federation 4
President Boys' Federation
President "R" Club
Secretary Student Council 2
Treasurer Montero Club 4
Montero Club 2-3-4
"R" Club 2-3-4
Baseball 1-2-3-4
Basketball 1-3
Record Staff 4
Annual Staff 4
Student Council 2-4

LEONORA WEBER *Lee**Marycliff*

French Club
Orchestra 4
"Pickles"
"The Buccaneers"

LILLIAN WEGNER
Bemiss
Girls' League

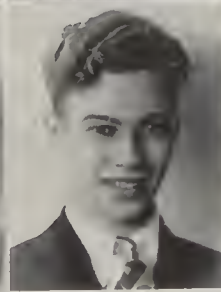
Lil



EVELYN WILLIAMS
Arlington
Sub Chairman Vocational Department 4
Harding Debate Club 4
French Club 2-3-4
Volleyball 1
Pirate Girl 4
Orchestra 4
Band 2-3-4
Girls' League Honor Roll 1
Girls' League Pep Band 3

HAZEL WELSH
St. Xavier
Baseball 1-2
Volleyball 1-2
Basketball 1-2
"Buccaneers"
"The Lucky Jade"
"Pickles"
Glee Club
Record Staff 4
Annual Staff 4
Study Hall Checker

Hazel



EUGENE WIRSCH
Bemiss
"R" Club 2-3-4
"C" Club 4
Track 1-2-4
Basketball 1-2-3-4
Football 1-2
Baseball 1
Record Staff 4
Annual Staff 4
Fire Squad
Vell Leader 1

TRUMAN WEST
Columbia
National Honor Society
Fire Squad
Hall Patrol
Vice President Cosmic Club 4
President Science Department
Boys' Federation 4
Track 3
Baseball 1
Senior Honor Roll

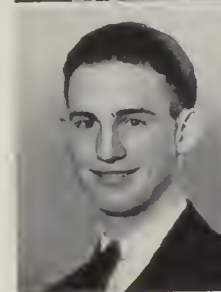
Tru



JACK WOLLASTON
St. Francis
Quill and Scroll 3-4
Secretary Quill and Scroll 3
Class Secretary 3
Vice President Quill and Scroll 4
Vice President Montero Club 3
Secretary of Athletic Department Boys' Federation 4
Secretary Boys' Federation 4
Montero 2-3-4
Cosmic 4
Math Club 4
"R" Club 2-3-4
Football 1-2-3-4
Basketball 1-2-3-4
Record Staff 3-4
Annual Staff 3
Student Council 3
Conduct Board Boys' Federation
Fire Squad 3-4
Fire Chief 4

JACK WHEELER
Longfellow
Quill and Scroll 3-4
Rifle Club 4
"R" Club
Manager 3
3½ Year Graduate
Music
Annual Staff
Freshman Yell Leader
Record Staff

Smiley



BETTIE WOOD
Longfellow
French Club 2-3-4
Sergeant at Arms French Club 4
Senior Honor Roll

GEORGE WHITING
Longfellow
Boys' Federation

Joe



DOROTHY WORNICK
Whitman
Conduct Board
Spanish Club 2-3
Baseball 1-2-3
Basketball 1-2-3
Tumbling 2-3
Basketball Captain 3

GLADYS WIDNER
Clagstone Idaho
National Honor Society 4
Harding Debate Club 3-4
Four Star Club 4
Girls' League Honor Roll 1-2-3-4
Senior Honor Roll 4
Big Sister 3
Girls' League Council
Chairman Entertainment Department
Band 3
Orchestra 2-3-4
Concert Mistress
Record Staff 4
Cub Edition
Annual Staff 4
Quill and Scroll 4

Peggy



IVIE WUNDERLICH
Hamilton
Harding Debate Club 4
Volleyball 1-2
Baseball Captain 1-2
Room Representative 1
Record Staff 4
Annual Staff 4
Study Hall Checker 3
Handy Andy 1-2

CLARENCE ZASTROW *Clarence*
Grant High School Port-
land Oregon
 Cub Edition Staff 4
 Annual Staff 4
 Record Staff 4
 Boys' Federation 4



ELSIE ZERBST *Elsie*
Longfellow
 Rogers Service Club
 National Honor Society
 Secretary G. A. C. 4
 President 11B Class
 Girls' Athletic Club 3-4
 Home Economics Club 3
 Basketball 1-2-3
 Volleyball 1-2-3
 Tumbling 1-2-3
 Baseball 1-2-3
 Girls' League Big Sister
 Bookkeeper Rogers Record 4
 Senior Honor Roll

JUNE CLASS HISTORY

Three of seven presidents elected by the June 1937 class during their career at Rogers have been girls. They were Thelma Bateman, Esther Johnson and Elsie Zerbst. The boys were Glen Pebles, Forrest Burgess, Kenneth Knowlton and Lorn Wallace. No officers were elected in the fall of 1936 as class organizations were replaced by the home room system.

Those who have been officers of the class are as follows: Freshmen B—Thelma Bateman, president; Jack Eachon, vice-president; Marian Renfro, secretary-treasurer; Maxine Elliot, student council; Robert Dunn, yell leader. Freshman A—Glen Pebles, president; Mary Kathryn True, vice-president; James Force, secretary-treasurer; Mildred Kennedy, student council; Ibbey Ostness, yell leader.

Sophomore B—Esther Johnson, president; Gus McTigue, vice-president; Virginia Gilbert, secretary-treasurer; Thelma Bateman, student council; Bob Weaver, yell leader; Lorn Wallace, treasurer. Sophomore A—Forrest Burgess, president; Fred Homad, vice-president; Jack Eachon, secretary-treasurer; June McDonald, student council; Bud Adams, yell leader.

Junior B—Elsie Zerbst, president; Ira Glass, vice-president; Jack Wolleston, secretary-treasurer; Doris Culverwell, student council; Fred Homad, yell leader. Junior A—Kenneth Knowlton, president; Jimmy Davis, vice-president; Jack Eachon, secretary-treasurer; Oscar Crain, student council; Bud Adams, yell leader.

Senior A—Lorn Wallace, president; Jack Eachon, vice-president; Julia Brown, secretary-treasurer.

JANUARY COMMENCEMENT

With Bill Campbell as toastmaster, Rogers' January graduating class held a mythical banquet, January 26, as the theme of their graduation exercises. Toasts were given by various members of the graduating class. Tableaux and skits were presented to emphasize the thoughts of the speakers. Miss Hazel Stevens supervised the production.

Addresses were also given by Valedictorian Frank Thiry and Salutatorian Elin Valsvig.

JUNE COMMENCEMENT

The June Commencement exercises, presented by the special English 8 class under the direction of Ray G. Hubbard, depicts high school scenes recalling the past.

The 1937 Pageant portrays scenes of students who, under correct guidance, are persuaded to take subjects which will be best suited to their individual requirements.



12B CLASS

First Row: Lincecum, Sanders, Hann, Hannaker, Hallsteln, Lyberger, Bonner, M. Peterson, Schroeder. **Second Row:** Swartz, Doble, Widner, Wise, Summers, Cutler, Beckman, Flanders, Herbert, Thorson, **Third Row:** Levos, Coleman, B. Anderson, N. Anderson, Farro, Lewis, Burkhardt, De La Grange, Farrell. **Fourth Row:** Clukey, Jones, Carlson, Hodgson, Jinnett, Felber, Knages, Davies. **Fifth Row:** Brown, Long, Munther, Akins, Stansbury, Hughes, Bonner, Alliston. **Sixth Row:** Uhlig, Olson.



IIA CLASS

First Row: Joy, Grace, McGhee, Harris, Edmisten, South, Clark, Busher, Carter, Pruitt, R. Via, Mountain, Sakrlson, Smith, Ortner, Tang, Nelson, Mc-
 Davis, **Second Row:** Novelli, Sturry, Coshaw, Fuscuzzi, Cass, Julian, T. Via, Jones, Huneke, Olson, Minetti, Jacol, Bruce, Smith, **Third Row:** Valenthine,
 Sager, Pratt, Scott, Knipfel, Bullard, Crumby, Hoffman, Owen, Palmiller, Bushnell, Burniece, Signorelli, **Fourth Row:** Peterson, Eagen, Mathews, Bates, West,
 Davis, Nelson, Stansbury, Bontz, Collin, Beams, Strand, Anderson, Lee, Van, **Fifth Row:** Brooks, Rowe, Schindler, Wilson, Nikotich, Walker, Whitney,
 Arnaldo, Julliano, Zurlinden, Lower, Johnson, Taylor, **Sixth Row:** Peterson, Marsh, Hale, Penna, McGulre, Bishop, Perkins, Barriek, Tobler, Grey, Blake,
 McKeen, Lundquist, Shlosaki, **Seventh Row:** Hearn, Herrington, Mael, Leavitt, Balch, Gaffaney, Goble, McHarness, Morris, Oxfielder.



IIB CLASS

First Row: Ray, McMann, Hoyo, Bullis, St. Onge, Ruark, Eames, Hanson, Moon, Second Row: Ponto, Munther, Ringo, Winters, Schaefer, McJee, Luse, Cox, Bangart, Third Row: Oster, Osso, Bossio, Hinz, Thompson, True, McFinn, Fourth Row: Shaw, Moffatt, Kroske, Reynolds, Brown, Updike, Steln, Carter, Fifth Row: Johnson, Allen, Lindgren, Sparks, J. Linden.



10A CLASS

First Row: Oberg, Marler, Cutler, Fletcher, Henry, Teraceno, Guyer, McHarness, Franke, Brewer, Dennis, **Second Row:** Odean, Merritt, Curryer, Rlek, Smith, Branson, Franke, Sills, Blanchard, Klult, Jones, Kordus, **Third Row:** Hafner, Williams, Pierce, Mors, Schemmel, Simonson, Honser, Burke, Bredesch, Olson, Wakeley, Peterson, Schiewe, Smith, **Fourth Row:** Brewer, Carter, Moffatt, Wynkoop, Bullard, Bergen, Rudrud, Larson, Johnson, Morris, Heath, Hughes, Simpson, **Fifth Row:** Thompson, Davis, Jones, Brown, Kroske, Carter, Steele, Curryer, L. Moffatt, Shaw, Danielson, Borlin, **Sixth Row:** Hardling, Reynolds, Case, Baker, Grlat, Terry, Homer, Grant, Anderson, Turnet, Stussl, Brown, Jones.



10B CLASS

First Row: Nichols, Hunt, Brooks, Cox, Reeder, Ostlund, Waller, Jawort, Keeler, Stork, Schroeder, Angel, Birge, Stefn, **Second Row:** Hanlifer, Harker, Caferro, Sherwood, Armstrong, Bernstein, Goble, Rodolph, Sullivan, Rogers, West, Stokke, Miller, Dieckler, **Third Row:** Ventl, Brown, Wlek, Wilson, Kirby, Davis, Meyers, Hodge, Kendrick, Casperson, Thompson, Johnson, Carlson, Meyer, Miller, Porter, Morgan, Miller, Appa, Willson, Summers, Tucker, Hill, Moran, Stahl, **Fourth Row:** Olson, Harris, Fay, Schindler, Evans, Edmonson, Renstrom, Hansen, Eller, Beedle, Tradve, **Sixth Row:** Jullano, Taylor, Holington, Graham, Clifford, Olson, Jortelock, Carl, Nygaard, Anderson, Freeman, Eaton.



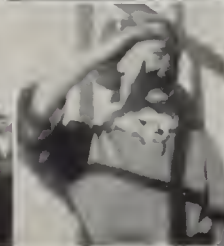
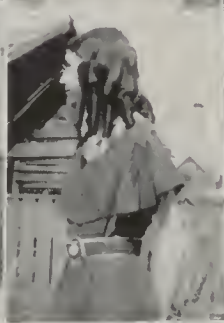
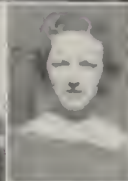
9A CLASS

First Row: Parkins, Johnson, Richardson, Thomas, Teraceno, Lawther, Helean, Rizzuto, Via, Miller, Shores, Nelson, Johnson, Hudson, Hobbs, Yarroll, Hufford, Clinton, **Second Row:** Van Slyke, Irby, Hann, Hearn, Murphy, Waters, Lynch, Myhre, Sinis, Schlemeyer, Thomson, Earls, Coffee, Olson, Baumgartner, Solid, Cowen, Thorson, Thompson, Bevaqua, **Third Row:** Shepler, McGee, Johnson, Thompson, McNevin, Hankins, Chambers, Blair, Fullerton, Frazler, Bean, Bowers, Moon, Sullivan, Ayler, Carlisle, Gustavson, Tews, Richardson, Dahl, Gill, Juliano, Freeman, **Fourth Row:** Buckley, Castle, Metzger, Harris, Carney, Drabe, Eng, Cameron, Brooks, Nesbitt, Anderson, Clark, Christianson, Moreland, DeStefano, Kellogg, Pickens, Taylor, Griffin, Waldron, **Fifth Row:** Metzger, Raaburg, Little, Stella, Thorson, Elliss, Peterson, Johnson, Hutchinson, Jennings, Lakey, Landers, Morris, White, Thompson, **Sixth Row:** Cooper, Katahiro, Gordon, Gau, Gottwig, Hughes, White, **Seventh Row:** Overland, Young, Tucker, Tang, Decker, Berto, Shulkin, Campbell, Young, Taylor, Clemens, Franklin, Young, Wagner, Freeman, Yemey, **Eighth Row:** Ambrose, Warren, Richards, True, Adams, Anderson, White, Zurbrugg, Boyes, Miotke, Allen, Maloney, Belyea, Borgett, French, Dunlap, Bernsteln, Christianson, Foster, Entenmann, Wagner.



9B CLASS

First Row: Stone, Rizzuto, De'oe, Mustard, Taylor, Lundquist, Klefer, Ludwig, Melcho, Scott, Anderson, Phillips, Burdell, **Second Row:** Hodstrom, Wise, Rusher, Simonson, Morse, Pascuzzi, Anderson, Glass, Johnson, Pederson, Lightfoot, Krause, Luse, **Third Row:** Daniels, Ziegler, Fairweather, Kelly, Hicks, Moore, Shaw, Ross, Brown, Connolly, Olson, Krause, Bonoschek, DeLong, **Fourth Row:** Cobb, Blodgett, Brennan, Robinson, Pizzallo, Johnson, Gale, McDonald, Town, Hardy, Meade, Edmiston, Cook, Elliot, Johnson, **Fifth Row:** Christlanson, Christlanson, Martin, Bays, Young, Cozzetto, Gerkensmeyer, Tomlinson, Akston, Sutherland, West, Freeman, Kerr, **Sixth Row:** Klrschke, Simpson, Wood, Ludwig, Young, Sutherland, Smith, Pleton, Davis, Leonard, Martin, Kathman, Molar, Russell.





FEATURES







First Row: Heath, Colony, Ortnier, Bevan, McGhee, Signorelli, Ratliff, Zumhoff, Hetherington, A. Peterson, West, Gaines, Felber. **Second Row:** Glass, Knowlton, Haskins, McDavis, Williams, Wakeley, Luse, Clemens, Hopkins, Felber, Balch, White, Jinnett. **Third Row:** Reynolds, Leavitt, Strantz, Chambers, Terry, Wallace, Young, B. Peterson, Sandberg, Hanson, Alfstad.

STUDENT COUNCIL

FIRST SEMESTER

Genevieve Bevan	President
Jack Leavitt	Vice-President
Kenny Knowlton	Secretary
Edythe Colony	Treasurer

MEMBERS

Lorraine Felber
Don Balch
Edythe Colony
Genevieve Bevan
Leonard Haskins
Juanita Hopkins
Howard Coffman
Glen Chambers
Kenneth Knowlton
Lorn Wallace
Bob Strantz
Sam Tortorelli

Eleanor Jinnett
Helyn Felber
Jack Leavitt
Don McDavis
Bill Peterson
Alma Peterson
Marion Ortnier
Marie Zumhoff
Ed Reynolds
Roy Williams
Kathryn Luse
Angelina Signorelli

Charles Wakeley
Earl Terry
Floyd Newell
Ruth Hetherington
Peggy Jean Elijah
Helen Ratliff
Rex Hansen
Glen Burkhardt
Betty Gaines
Kathryn West
Harry Young
Bill Alfstad

The Student Council is the official governing body of the Associated Students. This year class officers were not elected, so Council representation is according to Home Rooms. Advisers are Principal J. D. Meyer, Miss Rose Finnegan and J. M. Tewinkel.



First Row: Stein, Weaver, Blake, Bateman, Burkhardt, Wilson, Meleho, Via, Blodgett, Scott, Christianson, Cobb. **Second Row:** Casey, White, Hodgson, Renfro, Waters, Johnson, Carter, Pickens, Haight, Collin, West, Wigle, Alfstad, Case. **Third Row:** Thompson, McGuire, Ramey, Johnson, Deromedi, Patterson, Lipps, Bodey, Carter, Ventl, Shulkin, Hawkins, Bishop.

STUDENT COUNCIL

SECOND SEMESTER

Ray Patterson	President
Thelma Bateman	Vice-President
Glen Carter	Secretary
Gladys White	Treasurer

MEMBERS

Thelma Bateman
Glen Carter
Ray Patterson
Gladys White
Marian Renfro
Sherman Blake
Bob Shulkin
Esther Johnson
Engene Deromedi
Alma Ramey
Gail Hodgson
Roy Bishop
Jerry McGuire
Theresa Via

Harriette Collin
Rose Marie Bodey
George Stein
Sam Ventl
Norma Thompson
Dorothy Scott
Don Carter
Joseph McBreen
Roger Case
Irma Lipps
Rosina Johnson
Mamie Jean Casey
Willis Clem
Glen Burkhardt

Beverly Wilson
Kathryn West
David Haight
Bill Alfstad
Vincent Pickens
Dorothy Waters
Jacqueline Lowther
Roger Irvine
Ruth Christianson
Marie Wigle
Margaret Blodgett
Edith Meleho
Victor Cobb
Bob Weaver

Among the important projects of the Student Council this year have been the Moving-Up Con, the matinee dances, the play hours and student conduct supervision in convocations and in the halls.



First Row: Valsvig, Hinshaw, Jones, Ambrose, Jinnett, Colony, Conner, Helle, Zerbst, Thiry, Homad, Hughes, Campbell, Mr. Jinnett (adviser). Second Row: Mr. Meyer (adviser), Glass, Wallace, Ortner, Bevan, Felber, French, Hickok, Widner, Moser, Walker, Bysegger, Meyer, Clukey, Surlano.

NATIONAL HONOR SOCIETY

FIRST SEMESTER

Frank Thiry

President

MEMBERS

Jane Connor
John Ortner
June Helle
Jack Meyer

Jerry Ambrose
Lelia Jones
Frank Thiry
Helen Hickok

Lorraine Felber
Bill Campbell
Glen Luse
Genevieve Bevan

NEW MEMBERS

Frances Walker
Elsie Zerbst
Lorn Wallace
Gladys Widner
Fred Homad

Eleanor Jinnett
Edythe Colony
Howard Clukey
Elin Valsvig
Anita Hinshaw

Arthur Hughes
Engene Bysegger
Mildred French
Carmine Surlano
Virginia Moser

Character, scholarship, leadership and service are the qualities a student must possess to become a member of the National Honor Society. Teachers vote on the students to be tapped. A flaming torch mounted on a keystone is the emblem of the society.



First Row: Leavitt, Wallace, Brownell, Tang, Blake, Thiry, Eachon. Second Row: Colony, Bateman, Zerbst, Jinnett, Schroeder, Homad, Thompson, Ortner. Third Row: Bevan, Wise, Widner, Hearn, Levos, Glass, Fahey, Cooney, Renfro, Connor. Fourth Row: Barth, Johnson, Hallstein, Meyer, Patterson, Clukey, West, Morrow, Walker, True.

NATIONAL HONOR SOCIETY

SECOND SEMESTER

Frank Thiry

President

MEMBERS

Frances Walker
Elsie Zerbst
Lorn Wallace
Gladys Widner

Fred Homad
Jack Meyer
Eleanor Jinnett
Edythe Colony

Howard Clukey
Frank Thiry
Genevieve Bevan
Arthur Hughes

NEW MEMBERS

Don McDavis
Katherine Fahey
Mary Kathryn True
Norina Hearn
Inez Schroeder
Esther Johnson
Curtis Tang
Sherman Blake

Jack Leavitt
June Carlson
Truman West
Dorothy Cooney
Ray Patterson
Cletus Morrow
Juanita Barth
Edna Wise

Marion Ortner
Margaret Levos
Jack Eachon
Thelma Bateman
Marian Renfro
John Brownell
Leonard Thompson
Adeline Hallstein

Twenty-four new members were given the highest honor John R. Rogers could award them on April 23, when they were tapped for the National Honor Society. Principal J. D. Meyer and Vice-Principal E. R. Jinnett are the advisers. The annual initiation banquet is held in June.



First Row: Hinshaw, Huntley, Carlson, Mountain, Jinnett, Rinear, Renfro, Brown, Wilson.
Second Row: Moser, Casey, Lincecum, Bevan, Felber, French, Zumhoff, Widner, Connor.

GIRLS' LEAGUE

FIRST SEMESTER

Lorraine Felber	<i>President</i>
Lucille Huntley	<i>Vice-President</i>
Eunice Wilson	<i>Secretary</i>
Mildred French	<i>Treasurer</i>

DEPARTMENT CHAIRMEN

Jane Connor	Big Sister
Julia Brown	Vocational
Jane Carlson	Handicraft
Genevieve Bevan	Public Utility
Lenore Lincecum	Social Service
Yvonne Mountain	Social Etiquette
Bernice Preston	Camp Craft
Marie Zumhoff	Puppetry
Mamie Jean Casey	Dramatics
Gladys Widner	Music and Dancing
Edna Wise	Lyceum

The Girls' League was entirely revised during the fall semester of 1936. Many new departments were formed, giving more opportunities for work in the League. Miss Rose Finnegan is adviser.



First Row: McGhee, Jinnett, Huneke, Connor, Renfro, Hansen. Second Row: Carlson, Peterson, Casey, Mountain, Rinear, Johnson, McDonald.

GIRLS' LEAGUE

SECOND SEMESTER

Marian Renfro	President
Maxine Rinear	Vice-President
Eleanor Jinnett	Secretary
Esther Johnson	Treasurer

DEPARTMENT CHAIRMEN

Juanita Barth	Big Sister
June McDonald	Vocational
June Carlson	Handicraft
Mildred Hansen	Public Utility
Loretta Huneke	Social Service
Yvonne Mountain	Social Etiquette
Alma Peterson	Camp Craft
Grace McGhee	Puppetry
Mamie Jean Casey	Dramatics
Gladys Widner	Music and Dancing

The spring semester developed to a fuller extent the newly organized departments. Bi-monthly publications of the Girls' League Gossip depicted the various accomplishments of the departments.



First Row: Wollaston, Balch, Mr. Tewinkel (adviser), Crain, Suriano.

BOYS' FEDERATION

FIRST SEMESTER

Don Balch	President
Carmino Suriano	Vice-President
Jack Wollaston	Secretary
Oscar Crain	Sergeant-at-Arms

COMMITTEE HEADS

John Ortner	Scholarship
Bill Campbell	Christmas
Bob Weaver	Project

DEPARTMENTS

Department	Chairman	Adviser
Sports	Howard Coffman	Henry Bendele
Outdoor Life	Dale Fairburn	L. W. Saltz
Handicraft	Norris Keeler	C. E. Russum
Entertainment	Sam Venti	R. G. Hubbard
Science and Adventure	Frank Thiry	I. R. Minzel

Every boy in school claims membership in the Boys' Federation. Friendliness and guidance in school work and sponsorship of the boys' interests are the goals of the Federation.

General meetings on the final Monday of each month alternate with departmental meetings on the second Monday, all under the general direction of the executive committee. J. M. Tewinkel is adviser.



First Row: Weaver. Second Row: Glass, Tang, Akins.

BOYS' FEDERATION

SECOND SEMESTER

Bob Weaver
Curtis Tang
Ira Glass
Frank Akins

President
Vice-President
Secretary
Sergeant-at-Arms

COMMITTEE HEADS

John Ortner
Leonard Thompson
Don Balch
Lorn Wallace

Scholarship
Project
Conduct
Mixer

DEPARTMENTS

Department
Sports
Outdoor Life
Handicraft
Entertainment
Science and Adventure

Chairman
Sam Tortorelli
Dale Fairburn
Norris Keeler
Harvey Ryan
Truman West

Adviser
Henry Bendele
L. W. Saltz
C. E. Russum
R. G. Hubbard
I. R. Minzel

The Boys' Federation is divided into five departments: Entertainment, Athletic, Outdoor Life, Science and Adventure, and Handicraft, which function under faculty sponsorship. Each boy chooses his own field of interest and enrolls in that department.



First Row: Peterson, Bateman, Cox, Ortner, Drake, Colony, Connor, Weaver, Blake. **Second Row:** Wallace, Cooney, Hann, Walker, Zumhoff, Schalike, Wallace, Watson, Peterson. **Third Row:** St. Onge, Hanson, Hallstein, Shaw, Johnson, Thompson, Patterson, Ortner, Creed, Fullerton.

ROGERS SERVICE

MEMBERS

Mildred Peterson
Norma Hearn
Mildred French
Edythe Colony
Virginia Moser
Helen Hickok
Myrtle Schalike
Elin Valsvig
Verna Pressley
Marie Zumhoff
Winnie Drake
Evelyn Diedrick
Vera Peterson
Mavis Owen
Helen Mack
Jerry Ambrose
Vernadine Richter
Dorothy Cooney
Thelma Bateman
Genevieve Bevan
Lorraine Felber

Anita Hinshaw
Marion Ortner
Verlaine Sale
Frances Walker
Carolyn Hann
Keith Campbell
Bill Campbell
Ray Patterson
Dale Watson
John Ortner
Sherman Blake
Ira Glass
Noel Hosen
Ray Creed
Ted Oster
Dick Hayes
Bob Weaver
Tom Anderson
Kenny Randolph
Louis Drinkman
Stewart Burkhardt

Leonard Bogenreif
Alma Peterson
Jane Conner
Helen Kelley
Ruthe Wallace
Ila Hetherington
Fannie Farro
Edna Wise
Elsie Zerbst
Lorn Wallace
Glen Chambers
Eugene Bysegger
Clarence Anderson
Kenny Bonner
Tom Anderson
Kenny Knowlton
Leonard Thompson
Al Harris
Chester Johnson
Kendall Ryan
Doris Anderson

NEW MEMBERS

Doris Falt
Jerry Shaw
Gail Hodgson
Adeline Hallstein
Esther Johnson
Norma Waller

Lily Thompson
Charlotte Brooks
Florence St. Onge
Marian Cox
Dick McNamara
Raymond Oswald
Warner Burrill

Harry Hoisington
Frank Nelson
Sidney Mead
Leonard Haskins
Ray Fullerton
Bob Ralston

The Rogers Service club is an honorary society for students who have done outstanding work for the school. They are recommended for membership by the faculty. Mr. Coburn and Mr. Jinnett are the advisers.



First Row: McGhee, Drake, Helle, Ralston, Glass, Walker, Crain, Burniece. **Second Row:** Mr. Hughes (adviser), Zumhoff, Long, Wallace, Peterson, Dailey, Blake. **Third Row:** Linden, Baumgartner, Burgess, Berg, Campbell, Creed, Ryan.

ART

First Semester

Frances Walker
Marie Zumhoff
Nora Dailey
Ralph Berg

President

Vice-President

Secretary-Treasurer

Sergeant-at-Arms

Second Semester

Forest Burgess
Winnie Drake
Alma Peterson
Eugene Deromedi

MEMBERS

Don Balch
Elmer Baumgartner
Ralph Berg
Forest Burgess
Bill Campbell
Nora Dailey
Winnie Mae Drake

Lester Long
Alma Peterson
Bob Ralston
Kendall Ryan
Lorn Wallace
Frances Walker
Julia West

Marie Zumhoff
Sherman Blake
Clara Burniece
Lois Crane
Ray Creed
Jack Linden
Grace McGhee

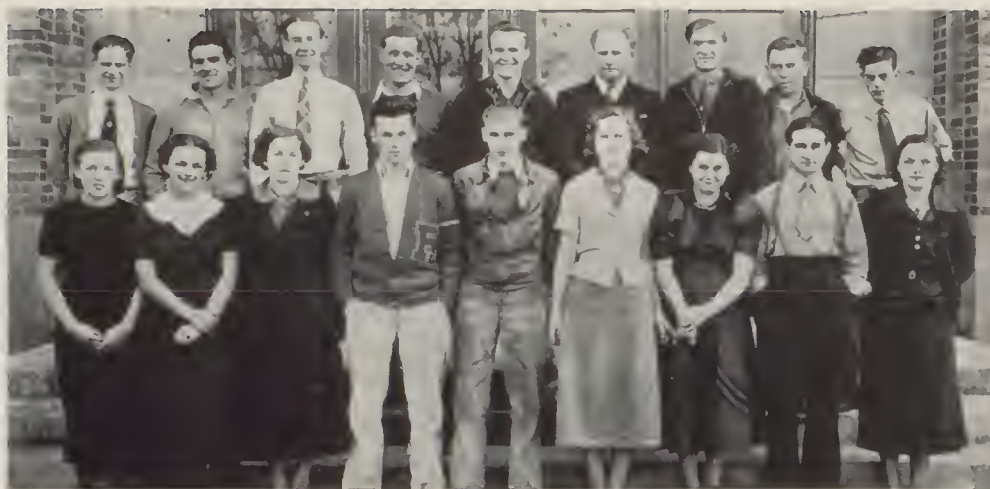
NEW MEMBERS

Gene Deromedi
Virginia Simonson

Pauline Bullard
Lewis Freeman

James Hubbard
June Summers

The object of the Art club is to promote activities and interests in art. Each member must have marked ability in arts and crafts. This year the club is studying photography and puppetry. F. C. Hughes is the adviser.



First Row: Bond, Leaf, Morse, Eachon, Adams, Frye, Kirk, Venti, Bonser. Second Row: Thompson, L. Venti, Mathis, Crafn, Davis, Mr. Becher (adviser), Barber, Farmer, Watson.

“C”

First Semester

Louis Venti
Mary Jane Wolferman
Thelma Bateman

President

Vice-President

Secretary-Treasurer

Sergeant-at-Arms

Second Semester

Ray Mathis
Laura Morse
Marjorie Simonson
Dale Watson

MEMBERS

Ervin Barber
Thelma Bateman
Violet Beckman
Clyde Bemis
Gladys Bonser
Marian Bonser
Helyn Bowers
Virginia Frye
Mildred Hanson

Ruth Hetherington
Eva Kirk
Dorothy Larson
Ray Mathis
Lillian Meadows
Elsie Mors
Laura Merse
Marjorie Simonson
Dale Watson

Gladys White
Bill Wolferman
Mary Jane Wolferman
Louis Venti
Louise Bond
Betty Ward
Esther Carlson
Pauline Poole

NEW MEMBERS

Leonard Bottger
Russell Thompson
Gene Wirsch
Bob Treffry
Harvey Farmer

Jack Eachon
Jim Davis
Fred Miller
Ruby Leaf
Norman Viles
John Osso

Jerry Rice
Oscar Crafn
Bud Adams
Howard De La Grange
Glen Pebles

The purpose of the “C” club is to acquaint students with those aspects of the government with which they will have to deal as voters in later life and to offer opportunities for social intercourse. The adviser is E. T. Becher.



First Row: Levos, Eller, McGuire, Linebarger, Nelson, Glass, Wollaston, Carter, West, Akins, Denise Johnson, Peterson, Burkhardt. **Second Row:** Lyberger, Sakrison, Leavitt, Tang, Brown, Felber, Wallace, Smithwick, Wilson, Shaw, Block, Nelson, Homad, Deromedi. **Third Row:** Wise, Fahey, Carlson, Thompson, Keeler, Shulkin, Campbell, Burgess, Jones, Dick Johnson, Ortnier, Patterson, Clukey.

COSMIC

First Semester

Harry Mills
Clifford Brown
Edna Nelson

President

Vice-President

Secretary-Treasurer

Second Semester

Clifford Brown
Truman West
Marialese Eller

MEMBERS

Frank Akins
Josephine Block
Clifford Brown
Mary Burkhardt
Bill Campbell
June Carlson
Glen Carter
Howard Clukey
Eugene Deromedi
Marialese Eller
Helyn Felber
Katherine Fahey

Fred Homad
Lorraine Jaques
Denise Johnson
Jack Jones
Warren Kohler
Jack Leavitt
Margaret Levos
Harold Linebarger
Jerry McGuire
Harry Mills
Edna Nelson
John Ortnier

Walter Peer
Ray Patterson
Frank Thirty
Ethel Sakrison
Helen Shaw
Blanche Shiosaki
Caroline Suriano
Ruth Wallace
Truman West
Eunice Wilson
Edna Wise
Jack Wollaston

NEW MEMBERS

Clayton Tang
Dick Johnson
Carl Nelson
Norman Thompson

Norris Keeler
Forrest Burgess
Bob Shulkin
Gloria Lyberger

Iola Peterson
Virginia Smithwick
Ira Glass

Scientific demonstrations, experiments, lectures, industrial trips, and social activities constitute most of the activities of the Cosmic club. Irvin R. Minzel is the adviser.



First Row: Felber, Ortner, Vincent, French, Marsh, Jinnett, Signorelli, J. Smith, Mr. Purdy (adviser). **Second Row:** Wallace, M. Smith, Zumhoff, Chambers, Carlson, Bysegger, J. Ortner, Patterson. **Third Row:** Thompson, Kauffman, Hayes, Johnson, Meyer, Campbell, Clukey, Knowlton.

FOOTLIGHTS

First Semester

Dick Hayes
Lorn Wallace
Eleanor Jinnett
Helyn Felber
Ray Patterson

President
Vice-President
Secretary-Treasurer
Corresponding Secretary
Sergeant-at-Arms

Second Semester

Lorn Wallace
Marion Ortner
Angelina Signorelli
Dick Johnson

MEMBERS

Howard Clukey
Helyn Felber
Ray Patterson
Glen Chambers
Juanita Hopkins
Eugene Bysegger
Eric Carlson
John Ortner

Dick Hayes
Norman Thompson
Lorn Wallace
Jack Meyer
Kenny Knowlton
Mildred French
Curtis Tang
Angelina Signorelli

June Smith
Dick Johnson
Marlene Smith
Helen Marsh
Marcia Vincent
Keith Campbell
Eleanor Jinnett

NEW MEMBERS

Dorothy Larson
Marie Zumhoff

Raoul Kauffman
Noel Hosea
Bruce Moock

Harriette Collin
Don Johnson

The Footlights club is for the junior and senior dramatists of the school. Four cons are given each year, and during the course of the year parties and an outing are held. Footlights club also has an orchestra consisting of ten pieces. J. L. Purdy is the adviser.



First Row: Gump, Cutler, Peterson, Collin, Renfro. Second Row: Miss LeFevre (adviser), Barth, Wood, Wallace, Wycoff, Helle. Third Row: Hearn, Bonner, Walker, Weber, Williams.

FRENCH

First Semester

Marian Renfro
Frances Walker
Frances Williamson

President
Vice-President
Secretary-Treasurer

Second Semester

Marian Renfro
Frances Walker
Frances Williamson

MEMBERS

Juanita Barth
Lillian Bonner
Evert Bowers
Harriette Collin
Virginia Cutler
Don McDavis
Beth Drake
Jerry Ericson

Dorothy Gump
Norma Hearn
Violet Hoffman
Edna Nelson
Martin Palmquist
Alma Peterson
Marian Renfro
Frances Walker

Ruthe Wallace
Leonora Weber
Evelyn Williams
Frances Williamson
Patricia Willmore
Bette Wood
Isabelle Wycoff

The French club was organized to promote a better understanding of the French people and their language. To become eligible for membership, a student must have studied French. Miss Marion G. LeFevre is the adviser.



First Row: Newman, Schroeder, Waller, True, Cooney, Heisler. Second Row: Mrs. Boyce (adviser), Zurlinden, Carter, Thompson, Curryer, Kelley. Third Row: Leavitt, Carlson, McNamara, Meyer, Olson.

GERMAN

Mary Kathryn True	President
Jack Leavitt	Vice-President
Dorothy Cooney	Treasurer
Mabel Turner	Secretary
Dick McNamara	Sergeant-at-Arms

MEMBERS

Erie Carlson
Betty Kelley
Glen Carter
Gladys Schindler

Inez Schroeder
Ralph Lower
Jack Meyer
Josephine Block

Leonard Thompson
Dick Johnson
Rose Marie Bodey

NEW MEMBERS

LaVernia Qnaschnik
Elaine Waller
Eva Whitney
Violet Wilson
Hazel Zurlinden

Roy Williams
Donald Olson
Annie Newman
Thelma Jones
Esther Flemmer

Magdalene Gehrke
Roland Heisler
Flora Curryer
Don Diediker

The German club is promoted to interest more students in German. Parties are held during the year, and an outing each spring. Mrs. Marie Boyce is the adviser.



First Row: T. Via, Brown, Collin, Mott, Strand, Ramey, Johnson, Rinear, Freeman, Hicks, McDougall, R. Via. Second Row: Peterson, Mustard, Zerbst, Preston, Carlson, Hallstein, Miss Perkins (adviser), Anderson, Zurinden, Hearn, True, Burkhardt, Schroeder.

G. A. C.

First Semester

Helen Shaw	<i>President</i>
Helen Hickok	<i>Vice-President</i>
Ann Hunt	<i>Secretary</i>
June Buhrer	<i>Treasurer</i>

Second Semester

Alma Ramey
Julia Brown
Elsie Zerbst
Mary Burkhardt

MEMBERS

Barbara Anderson
Julia Brown
June Buhrer
Mary Burkhardt
Lorraine Felber
Norma Hearn
Helen Hickok
Ann Hunt

Lucille Huntley
Lorraine Jaques
Helen Joy
Kathryn McDougall
Peggy McLean
Beverly Mustard
Edna Nelson
Mildred Peterson

Alma Ramey
Maxine Rinear
Marjorie Reynolds
Helen Shaw
Rose Via
Eunice Wilson
Elsie Zerbst

NEW MEMBERS

June Carlson
Harriette Collin
Margaret Freeman
Adeline Hallstein

Loeta Hicks
Geraldine Mott
Berneil Preston
Denise Johnson
Inez Schroeder

Mary Kathryn True
Mildred Strand
Hazel Zurinden
Theresa Via

The Girls' Athletic club is for those who are active in sports and earn enough points to entitle them to belong to the club. They make the emblems for Girls' League, as well as the pom-poms during the football season. During the year they have several parties. Miss Mabel Perkins is the adviser.



First Row: Glass, Eller, Colony, Tang, Moser, McDavis, Linebarger, Wollaston, Hodgson, Penna, Oas, Wunderlich, Leaf. Second Row: Mrs. Morrison (adviser), Kelley, Peterson, Carter, Oster, Leavitt, Long, McGuire, Widner, Helle, Ramey, Brown, Hearn, DeLaGrange. Third Row: Geisler, Deromedi, Akins, Crain, McBreen, Lyberger, Nelson, Stevens, McDonald, Williams, Barth, Johnson.

HARDING DEBATE

First Semester

Lelia Jones
Virginia Moser
Gail Hodgson
Ira Glass

President

Vice-President

Secretary-Treasurer

Sergeant-at-Arms

Second Semester

Ira Glass
Marialese Eller
June McDonald
Harold Linebarger

MEMBERS

Frank Akins
Helen Allen
Jerry Ambrose
Juanita Barth
Beatryce Bruce
Oscar Crain
Howard De La Grange
Eugene Deromedi
Marialese Eller
Lorraine Felher
Robert Geisler
Viola Getman
Ira Glass
Norma Hearn

Gail Hodgson
Lucille Huntley
Lelia Jones
Helen Joy
Betty Kelley
Jack Leavitt
Harold Linebarger
Lester Long
Don McDavis
June McDonald
Jerry McGuire
Harry Mills
Virginia Moser
Elmer Oas

Alma Ramey
Kenny Randolph
Carmine Suriano
Clayton Tang
Norma Waller
Gladys Widner
Maxine Widner
Jack Wollaston
Carl Nelson
Ralph Stevens
Homer Lyberger
Evelyn Williams
June Helle
Jane Allison

NEW MEMBERS

Joe McBreen
Yvonne Mountain
Lola Peterson
Ben Penna

Denise Johnson
Ruby Leaf
Lucille Petretee
Clifford Brown

Edythe Colony
Glenn Carter
Ivie Wunderlich

Harding Debate is one of the largest clubs in the school, and its main purpose is to sponsor and support debate. Those who take debate become honorary members. Each year the club gives its noted Harding Debate banquet as well as two pay cons. Mrs. Iva Morrison is the adviser.



First Row: Tang, Williams, Widner, McDonald, Farro. Second Row: Lyberger, Helle, McBreen.

HARDING DEBATE ORCHESTRA

First Semester

Helen Joy
Harry Mills
Gladys Widner
June McDonald
Evelyn Williams
Homer Lyberger
June Helle
Clayton Tang
Elmer Oas

Piano
Violin
First Sax
Tenor Sax
Third Sax
Trombone
Trumpet
Clarinet
Drums

Second Semester

Fannie Farro
Clifford Brown
Gladys Widner
June McDonald
Evelyn Williams
Homer Lyberger
June Helle
Clayton Tang
Joe McBreen

The Harding Debate club orchestra was organized in September to play for the club banquet, cons. and school dances. Gladys Widner directs the orchestra. Mrs. Iva Morrison, adviser of Harding Debate, also is adviser for the orchestra.



First Row: Brown, Bateman, Carlson, B. Mustard, Culverwell, Carter, Pyne, Ruark, Nikotich. Second Row: Brooks, Cox, Renfro, Wycoff, Sakrison, Simonson, Knipfel, Flemister. Third Row: Edmiston, Jinnett, M. Mustard, Zurlinden, Johnson, Busher, Fairburn.

HOME ECONOMICS

First Semester

Denise Johnson
Beverly Mustard
Elaine Cook
Doris Culverwell

President
Vice-President
Treasurer
Secretary
Social Secretary
Sergeant-at-Arms

Second Semester

Julia Brown
Maxine Rinear
Marian Renfro
Georgina Nikotich
Agnes Busher
Thelma Bateman

MEMBERS

Thelma Bateman
Agnes Busher
Mary Brooks
Julia Brown
June Carlson
Marian Carter
Ethel Cox
Marion Cox
Doris Culverwell

Enid Edmiston
Ruthie Fairburn
Vera Flemister
Eleanor Jinnett
Denise Johnson
Delvina Knipfel
Golden Miller
Beverly Mustard
Margie Mustard

Georgina Nikotich
Synthia Pyne
Marian Renfro
Maxine Rinear
Arlene Ruark
Ethel Sakrison
Virginia Simonson
Hazel Zurlinden
Isabel Wycoff

The purpose of the Home Economics club is to promote higher ideals for all the girls in the home economics field. Miss Edna Herrington is the adviser, assisted by Miss Thelma Thorne.



First Row: McIntee, Stoffer, Armstrong, Hearn, Waller, Saltz, Edmonson, Murphy, Cook, Thompson, Diediker. **Second Row:** Blancher, Eller, Peterson, Miller, Bysegger, Johnson, Carter, Ratliff, Young. **Third Row:** Venti, Steele, Curryer, Rice, Ziegler, McBreen, Wagner, Gumm, Mr. Hubbard (adviser).

JUNIOR DRAMATIC

First Semester

Charles Gumm
Helen Ratliff
Peggy Jean Elijah
Jack Eller

President
Vice-President
Secretary-Treasurer
Sergeant-at-Arms

Second Semester

Helen Ratliff
Jack Eller
Mamie Jean Casey
Elaine Waller

MEMBERS

Bill Birchard
Glen Burkhardt
Isla Bysegger
Don Carter
Mamie Jean Casey
Harold Curryer
Don Diediker
Fern Edmonson
Peggy Jean Elijah

Jack Eller
Charles Gumm
Glenora Hunt
Joe McBreen
Regina McIntee
Madeline Murphy
Margaret Miller
Johnnie Osso
Dorothy Pederson
Helen Ratliff

Marjorie Rice
Warren Saltz
Eleanor Schroeder
Craig Thompson
Thula Trone
Sam Venti
Elaine Waller
Mary Jane Wolferman
George Young

NEW MEMBERS

Anita Armstrong
Herman Blancher
Vivian Cook

Rosina Johnson
Don Steele
Phyllis Stoffer

Max Thompson
Stanley Wagner
Geraldine Ziegler

This club was organized for the younger thespians of the school, the freshmen and sophomores only. Each year the club presents two cons, and during the course of the year they give parties. Ray G. Hubbard is the adviser.



First Row: Thorson, Bruce, Ortner, Summers, Adams, Wollaston. **Second Row:** Baker, Brownell, Bemis, Davis.

MATH



Clyde Bemis
John Brownell
Jimmy Davis

President
Vice-President
Sergeant-at-Arms

MEMBERS

Clyde Bemis
John Brownell
June Summers
Bud Adams

Jimmy Davis
Frank Thiry
Wilbur Thorson
Marion Ortner
Beatryce Bruce

Jack Wollaston
Dick Baker
Bob Shulkin
Walter Holley

This club was started to interest students in mathematics and various applications. The adviser is W. E. Doolittle.



First Row: McGuire, Carter Oster, Bonner, Brownell, Wollaston, Knowlton, Shulkin, Burkhardt. Second Row: Leavitt, Glass, Chambers, Mr. Black (adviser), Wallace, Foster, Eachon, Weaver.

MONTERO

First Semester

Glen Chambers
Glen Carter
Bob Weaver

President
Secretary
Treasurer

Second Semester

Kenny Bonner
Ted Oster
Lorn Wallace

MEMBERS

Rob Berg
Kenny Bonner
John Brownell
Bob Burkhardt
Glen Carter
Glen Chambers
Jack Eachon
Dale Foster

Dale Fairburn
Ira Glass
Kenny Knowlton
Jack Leavitt
Don McDavis
Jerry McGuire
Ted Oster
Bob Shulkin

Henry Sweet
Lorn Wallace
Jack Wollaston
Bob Weaver
Miles Ertel
Don Innes
George Jackson

The Montero club is composed of sophomores, juniors, and seniors. Its purpose is to encourage all outdoor sports such as skating, short hiking trips, and at least one visit to Mount Spokane a year. The adviser is J. W. Black.



First Row: Brown, Shiosaki, Barth, Bevan, Widner, Cooney, Blake. Second Row: Wollaston, Wheeler, Mathis, Keeler, Campbell, Chambers, Thompson, Mr. Byrne (adviser).

QUILL AND SCROLL

First Semester

Anita Hinshaw
Helen Joy
Juanita Hopkins
Genevieve Bevan
Jack Wollaston

President
Vice-President
Recording Secretary
Corresponding Secretary
Treasurer

Second Semester

Julia Brown
Jack Wollaston
Edna Wise
Sherman Blake
Keith Campbell

MEMBERS

Genevieve Bevan
Sherman Blake
Julia Brown
Keith Campbell
Dorothy Cooney

Helen Hickok
Anita Hinshaw
Juanita Hopkins
Lucille Huntley
Lelia Jones
Helen Joy

Blanche Shiosaki
Eunice Wilson
Jack Wollaston
Jack Wheeler
Edna Wise

NEW MEMBERS

Juanita Barth
Glen Chambers

Norris Keeler
Ray Mathis
Truda Tavares

Norman Thompson
Gladys Widner

Quill and Scroll is the international honorary society for high school journalists. One must be experienced in writing, editing or business management in order to be a member. The adviser is L. T. Byrne.



First Row: Morris, Wirsch, Weaver, Hearn, Candclero, Penna, Carter, Osso. **Second Row:** Newton, Payne, Jackson, Reynolds, Pebles, Anderson, Crain, Leavitt, Eachon, Freeman. **Third Row:** McGuire, Tang, McDavis, G. Balch, Tortorelli, Glass, Davis, Knowlton, Adams, Bishop, Linebarger. **Fourth Row:** Mr. Benjamin (adviser), Dembowski, Wheeler, Bland, Akins, Thompson, Chauvin, Miller, D. Balch, Curt Tang, Wollaston.

“R”

Bob Weaver
 Gene Balch
 Ira Glass

President
Vice-President
Secretary

MEMBERS

Clarence Anderson
 Kenny Randolph
 Carmine Suriano
 Oscar Crain
 Fred Miller
 Jack Wollaston
 Don Balch
 Sam Tortorelli
 Henry Sweet
 Howard Coffman
 Frank Akins
 Glenn Carter
 Jack Leavitt
 Glen Pebles
 Ed Reynolds
 Clayton Tang
 Curtis Tang

Dale Watson
 Bob Weaver
 Dick Liberty
 Gene Wirsch
 Fred Homad
 Harold Linebarger
 Bud Adams
 Don Newton
 Ira Glass
 Kendall Stansbury
 Jack Wheeler
 Forest Bishop
 Roy Bishop
 Jack Eachon
 LaVerne Marier
 Don Innes
 Bill McHarness

George Jackson
 John Osso
 Gene Chauvin
 Ray Oswald
 Ben Penna
 Bob Bland
 Jim Davis
 Lewis Freeman
 Jerry Ambrose
 Norma Hearn
 Amelia Candclero
 Robert Berg
 Stuart Davis
 Jerry McGuire
 Leonard Thompson
 Lorn Wallace
 Gene Balch

NEW MEMBERS

Harold Payne

Don McDavis

Those who earn their letters in any sport are given membership in the “R” club. The club generally gives one con every year in addition to an annual spring outing. M. J. Benjamin is the adviser.



First Row: Blancher, Tang, G. Stein, Strand, Marsh, Lindgren, Hufford, Palmquist, J. Stein. Second Row: Homad, True, Bevan, Updike, Anderson, Carter, Sparks, Mr. Eaman (adviser).

RADIO

Bob Strand
Fred Homad
Walt Lindgren
George Stein
Allen Updike

President
Vice-President
Secretary
Treasurer
Sergeant-at-Arms

MEMBERS

Art True
Harry Sparks
Alan Updike
Fred Homad
Martin Palmquist

Bob Strand
George Stein
Walt Lindgren
Douglas Carter
Wilbert Hufford

Robert Anderson
Kenneth Tang
John Stein
Alfred Bevan
Herman Blancher

The Radio club, as the name implies, was organized to promote interest in radio at Rogers. The main purpose of this club is to get an amateur license for each of its members. It is the newest club at Rogers. The adviser is James Eaman.



First Row: Petty, Minnetti, T. Via, Bullard, R. Via, Jullan, Jacoi, Arnaldo, Jullano, Farrell.
 Second Row: Mrs. Bovee (adviser), Fairburn, Bobo, Signorelli, Baker, Simpson, Stansbury, Foster, Patchen.

SPANISH

First Semester

Warren Kohler
 Walter Peer
 Dick Baker
 John Petty

President
Vice-President
Secretary-Treasurer
Sergeant-at-Arms

Second Semester

Theresa Via
 Angelina Signorelli
 Mary Jacoi
 Melvina Stansbury

MEMBERS

Mamie Arnaldo
 Richard Baker
 Violet Beckman
 Pauline Bullard
 Everett Ferrell
 Mary Jacoi
 Louise Julian
 Margaret Jullano
 Margaret Levos

Glen Luse
 Lenore Lincecum
 Lena Minetti
 Walter Peer
 Warren Kohler
 Mildred Peterson
 John Petty
 Doris Reamer
 Angelina Signorelli

Melvina Stansbury
 Lily Thompson
 Mabel Turner
 Rose Via
 Theresa Via
 Eunice Wilson
 Margaret Swartz
 Lee Patchen

NEW MEMBERS

Jeanne Blodgett
 Margie Beedle
 Margaret Bobo

Virginia Baumgartner
 Eileen Cowles
 Pearl Eames
 Irving Anderson

Charles Cordis
 Clifford Jones
 Bill Simpson

The Spanish club is composed of students who have taken Spanish, and the purpose of the club is to get students interested in what other countries do. The adviser is Mrs. Marie Bovee.

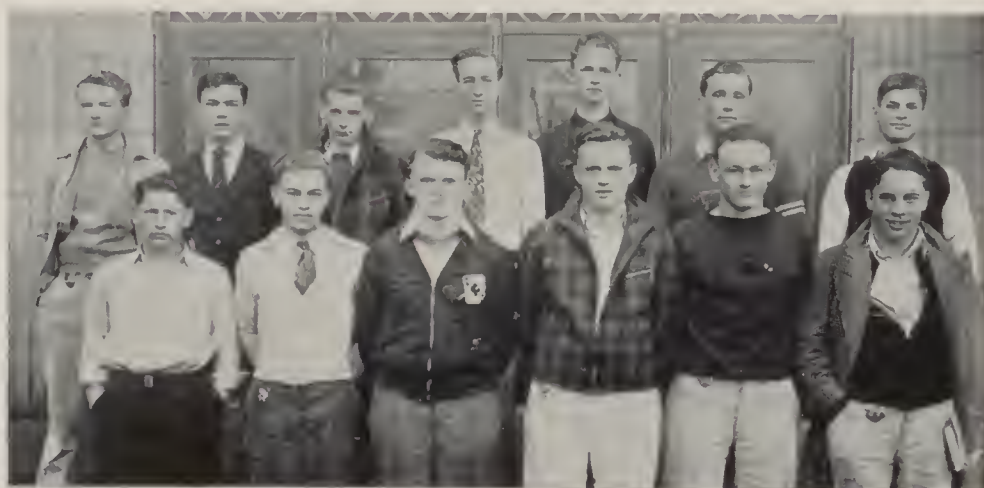
HALL PATROL-FALL



FIRE SQUAD-FALL



FIRE SQUAD-SPRING



STUDY HALL, LIBRARY WORKERS—FALL



STUDY HALL, LIBRARY WORKERS—SPRING



HALL PATROL—FALL

First Row: Whitney, Pressley, Nelsen, Corfield, Nerhelm, Owen, Huneywell, Frye, Hansen.
Second Row: Sampson, Zurlinden, Frye, McDougall, Levos, DiLuzio, Homer, Shaw, Wagner, Tobler.
Third Row: Ralston, Burrill, Mooch, Bevan, McNamara, Bergman, Linden, Carter, Blancher.

FIRE SQUAD—FALL

First Row: Tortorelli, Holley, Suriano, Sweet, Wollaston, Berg, Oswald, McDavis, Moffatt, Mr. Jlnnett (adviser).
Second Row: Randolph, Pebles, Tang, S. Davis, Miller, Balch, Crain, J. Davis, Bland.

FIRE SQUAD—SPRING

First Row: Weaver, Wirsch, Wollaston, Davls, Balch, Bemis.
Second Row: McDavis, Knowlton, Adams, Mathis, Thompson, Crain, Linebarger.

STUDY HALL WORKERS—FALL

First Row: McGhee, Starry, Lynch, Olson, Brooks, Levos, White, Miller, Welsh.
Second Row: Flanders, Renfro, Larson, Nelson, West, Crumbley, Hann, Thompson.

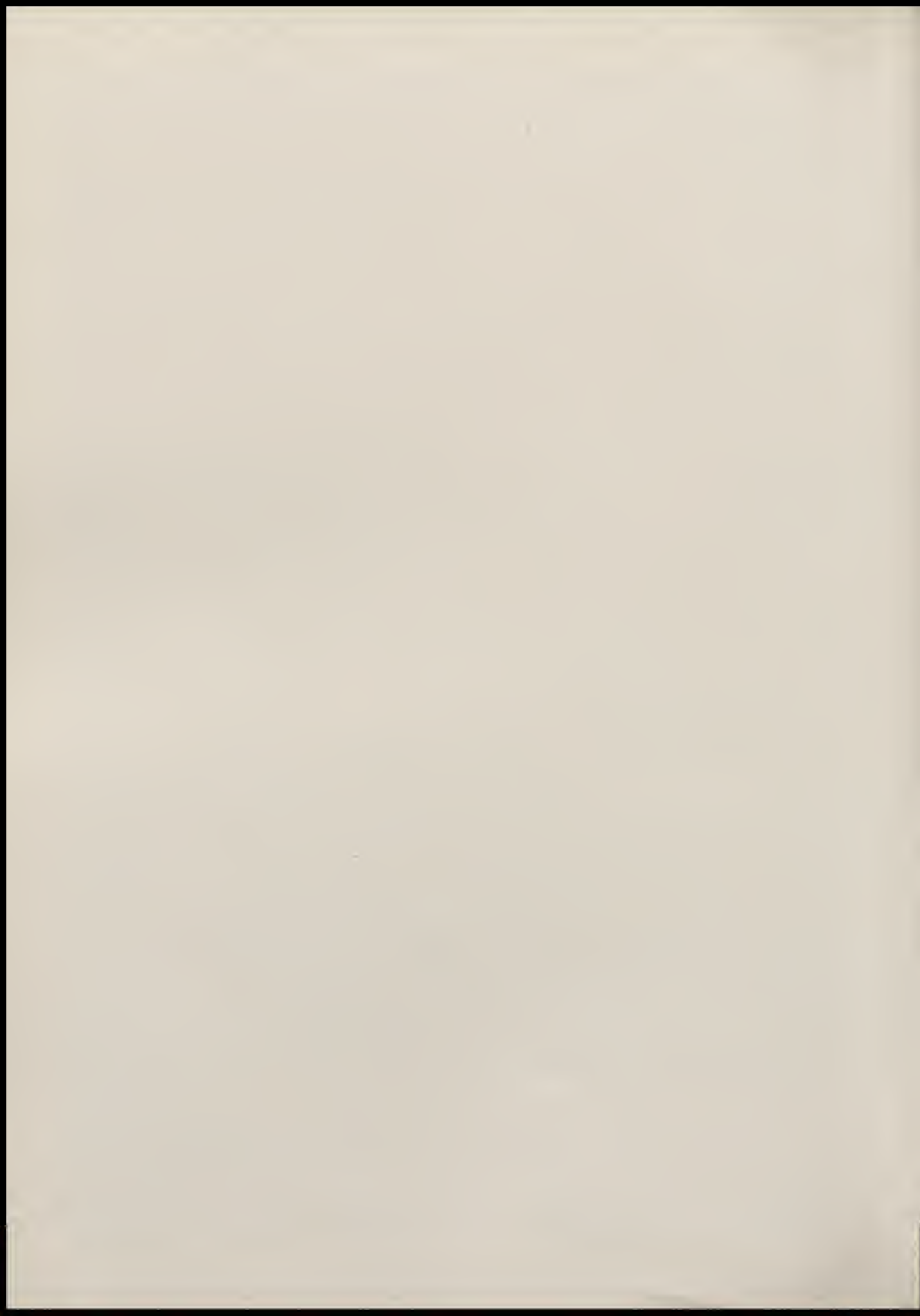
STUDY HALL AND LIBRARY WORKERS—SPRING

First Row: Elise, Galnes, Knlpfel, Palmiter, Olsen, Carter, Bulls.
Second Row: Wallace, Renfro, Bernstein, Levos, Widner, Nelson, Crumbley.
Third Row: Hann, Larson, Hudson, Hutchison, Brooks.





FINE ARTS





First Row: McCall, Ambrose, Colony, Renfro, M. Ortner, Benner, Schroeder, South, Mr. Jimmett (coach). Second Row: McDavis, Akins, Payne, J. Ortner, Campbell, Updike, Lindgren, Bowers, Anderson.

DEBATE

Date	Opponent	Decision
November 13	Deer Park negative at Deer Park	Rogers
December 4	Davenport negative at Rogers	Rogers
January 15	Gonzaga affirmative at Rogers	Rogers
January 22	North Central affirmative at Rogers	Rogers
January 22	Lewis and Clark negative at L. C.	Rogers
January 25	Colfax negative at W. S. C.	Colfax

AFFIRMATIVE TEAM

Keith Campbell
John Ortner
Marion Ortner

NEGATIVE TEAM

Marian Renfro
Don McDavis
Walt Lindgren

Question: Resolved, that all electrical power utilities should be governmentally owned and operated.

The debate team entered both the city and the northeastern section of Washington series; winning first place in each. In the city series the Harvard cup was again in Rogers' possession.

The debaters did not have the opportunity to compete with Eastern teams due to the fact that Colfax defeated our affirmative team. The squad was coached by Vice-Principal E. R. Jimmett, who completed his tenth year as Rogers' debate head.



First Row: Casey, Felber, Poole, Jones, Rogers, Hodgson, Corfield. Back Row: Meyer, Moeck, Bysegger, Johnson, Hayes, Kauffman.

"THE WHOLE TOWN'S TALKING"

CAST

Dick Hayes	Mr. Simmons
Isabella Corfield	Mrs. Siminons
Raoul Kauffman	Chester Binney
Florence Rogers	Ethel Simmons
Helyn Felber	Letty Lythe
Eugene Bysegger	Donald Swift
Jack Meyer	Roger Shields
Mamie Jean Casey	Lila Wilson
Pauline Poole	Sally Otis
Gail Hodgson	Sadie Bloom
Frances Jones	Mrs. Jackson
Denise Johnson	Maid

"The Whole Town's Talking," a riotous three-act comedy, was presented November 25. The school orchestra, under the direction of Glenn B. Starr, played the musical selections.

Anita Loos and John Emerson combined their talents to produce this entertaining comedy, weaving a hilarious plot around the innocent blunders of Henry Simmons.

J. L. Purdy directed, assisted by Louis Venti. Dick Johnson and his assistant, Frances Walker, were in charge of properties.



First Row: Kauffman, Bysegger, Ratliff, Casey, Mr. Purdy (coach). Second Row: Detmer, Ryan, Chambers, Hayes.

"THE SHOW-OFF"

CAST

Helen Ratliff	Clara Hyland
Mamie Jean Casey	Mrs. Fisher
Isla Bysegger	Amy Fisher
Raoul Kauffman	Frank Hyland
Glen Chambers	Mr. Fisher
Warren Saltz	Joe Fisher
Dick Hayes	Aubrey Piper
Bruce Moock	Mr. Gill
Maynard Detmer	Mr. Rogers

"The Showoff," a story of a conceited bluffer from Pennsylvania, was presented in the Rogers auditorium, Friday evening, March 12. Musical selections were given by the Rogers orchestra, under the direction of Glenn B. Starr.

How the hero overcame parental opposition, married the heroine, and forced himself into his mother-in-law's home, were sources of continual merriment. J. L. Purdy, dramatics director, was assisted by Harvey Ryan.



First Row: Mr. Purdy (adviser), Hosea, Zumhoff, Drake, Wandler, Whitaker. **Back Row:** Wallace, Bradley, Ralston, Walker, Ure, Ryan, Creed.

STAGE CREW

First Semester

Ray Creed-Noel Hosea
Kendall Ryan
Ray Creed
Eugene Wandler
James Ure
Charles Whittaker

Second Semester

<i>Manager</i>	Kendall Ryan-James Hubbard
<i>Electrician</i>	James Ure
<i>Fly Man</i>	Ray Creed
<i>Curtain Man</i>	James Hubbard
<i>Assistant</i>	Eugene Wandler
<i>Assistant</i>	

PAINT CREW

Frances Walker
Marie Zumhoff
Winnie Drake
Lorn Wallace

<i>Manager</i>	Frances Walker
<i>Assistant</i>	Marie Zumhoff
<i>Assistant</i>	Winnie Drake
<i>Assistant</i>	Lorn Wallace

These students have managed the hard duties of painting the scenery used on the stage, shifting props, and controlling the electrical apparatus. They have spent long hours in making the all-school play sets and have willingly assisted during convocations. J. L. Purdy is the adviser.



First Row: Bond, Hodge, Evans, Ambrose, Helle, Hamaker, Eller (leader), Jinnett, Peterson, West, Leaf, Schemmel, Priano, Galnes, Burniece. **Second Row:** Culbertson, Burke, Cole, Strand, Carlson, Summers, Tucker, Miller, Moser, Smith, Zerbst, Waller, Reeder, Freeman, Allen. **Third Row:** Gorremians, Sullivan, Williams, Strand, Hafner, Ewing, Williams, Bonner, Widner, Simpson, Zurbrugg, McDonald, Jorgenson, Nisley.

PIRETTES

The history of the Pirettes begins with the old Hillyard high school. Beth Noben was the very first "Pirate Girl." She led songs during her senior year, using a small replica of the baton used by J. M. Tewinkel. The first Pirate Girls did not march, but just led songs.

Evelyn Meranda, who is now book clerk at Rogers, was an outstanding Pirate Girl for three semesters.

The group gradually grew until there were six song leaders. In 1935 it was decided to enlarge the group to include a marching unit, and twenty-five girls were chosen from a large number of volunteers. They formed various letters on the football field between halves of the games and did marching drills. Practice was held each morning before school.

In 1936 it was decided to combine the forty-eight Pirettes with the band, making a marching unit of ninety-eight to parade and perform at games. Marialese Eller was the drum major last fall.

Glenn B. Starr started the uniformed marching of the Pirettes and the band, and Miss Thelma Thorne, home economics teacher at Rogers, assisted with the colorful uniforms.



First Row: Mr. Starr (director), Yenney, D. Johnson, Dhondt, Kludt, V. Slyke, Alfstad, Whipple, Moreland, Eastburg, Campbell, Betten, Hosea, Nelson (drum major). Second Row: Melmes, Knowlton, Saltz, Coyle, Meyer, Carter, Kenneth Tang, Hill, Clayton Tang, Herrington, Richards, Caryle. Third Row: Clukey, Burkhardt, W. Taylor, Lyberger, F. Taylor, Goodman, Homad, Treffry, Braman, Thompson, D. Johnson. Fourth Row: Dembowski, Wheeler, Mook, Summers, Bell, Bangs, Fullerton, Brown, Peterson, Curt Tang, Zat.

BAND

CLARINET

Jacqueline Hafner
Lilian Bonner
Alfred Hill
Kenny Knowlton
June McDonald
Ivan McInnis
Jack Meyer
Clayton Tang

SAXOPHONE

Alice Hamaker
Fred Homad
Maxine Widner
Evelyn Williams

TROMBONE

Keith Campbell
Roland Dhondt

Dick Johnson
Don Johnson
Homer Lyberger
Dale Eastburg

TRUMPET

Carroll Dembowski
Howard Clukey
June Helle
Earl Peterson
Leroy Whipple
Mildred Strand
Mary Sullivan
Curtis Tang

BASS

Ted Freeman
Art Summers
Jack Wheeler

DRUMS

Dale Bell
John Goodman
Elmer Oas

BARITONE

Noel Hosea
Kenneth Tang

FLUTE

Ruby Leaf

HORN

Dick Caryle
James Kludt

The Band, under the direction of Glenn B. Starr, stepped out with new uniforms last fall and became the pride of the whole school. The organization played at all the football games and presented marching exhibitions between halves with the Pirate girls. The twirling baton was carried by Drum Major John Nelson. For the first time in the history of Rogers, the band presented a convocation devoted only to talents in the band. They also performed in concerts, pep convocations, P.-T. A. programs, and parades.



First Row: Cutler, Morgan, Culbertson, Curryer, Huneke, Willmore, Reno, Preston, Cass.
 Second Row: Widner, Starry, Wycoff, Cooney, Strasser, Murphy, McDonald, Helle, Anderson.
 Third Row: Mr. Starr (director), Creed, G. Widner, Olsen, Bonner, Hafner, Hicks, Kelmig,
 Mills, Simpson. Fourth Row: Wicks, Campbell, Lyberger, Mors, Perkins, McBreen, Oxrieder,
 Terry, Kauffman.

ORCHESTRA

VIOLIN

Norma Anderson
 Ray Creed
 Alveretta Culbertson
 Flora Curryer
 Virginia Cutler
 Warren Franklin
 Violet Johnson
 Mildred Keimig
 Harriet Morgan
 Berneil Preston
 Albert Simpson
 Catherine Strasser
 Dorothy Waters
 Gladys Widner

CLARINET

Lilian Bonner
 Mary Jane Cass
 June McDonald

TROMBONE

Keith Campbell
 Homer Lyberger

PIANO

Dorothy Cooney
 Isabelle Wycoff

VIOLA

Loretta Huneke
 Jean Starry

SAXOPHONE

Evelyn Williams

TRUMPET

Bill Terry
 Patricia Willmore

DRUMS

Joe McBreen
 Lowell Perkins
 Walter Wicks

OBOE

Vera Mae Mielhel

BASSOON

George Oxrieder

FLUTE

Marjorie Rice

CELLO

Maxine Widner

HORN

John Richard

BASS

Raoul Kauffman
 Leonora Weber

The orchestra furnishes the music for the school plays and graduation exercises, accompanies the operetta cast, and presents a Spring Festival each year.

Harry Mills was concert master the first semester, and Gladys Widner was concert mistress for the second semester. Glenn B. Starr is director of the orchestra.



MIXED CHORUS

First Row: Sanders, Coshaw, Hansen, Vincent, Hearn, Littell, Meicho, Ringo, Starry, Smith.
 Second Row: Smith, Bysegger, Johnson, Porter, Olson, McGee, DeChenne, Wollaston, Town.
 Third Row: White, Case, Sanders, Davis, Munther, L. Ventli, Hayes, Wagner, Gendreaux, Olson, S. Ventli.

"THE BUCCANEERS"

CAST

Dick Hayes	Captain Stubbs
Eugene Bysegger	John Smith
Rosina Johnson	Constance
Isla Bysegger	Abigail
Don Steele	Alfred Sneek
Bruce Moock	Wilfred Snoop
Maynard Detmer	Senator Bunkham
Norma Hearn	Martha
Stanley Wagner	Commander Cabot
Janet Hearn, Marlene Smith	Friends of Constance

Trouble and adventure aboard the yacht "Caprice," captained by the unhappy Captain Stubbs and chartered by the pompous Senator Bunkham and his party, furnish the plot of the comic operetta "The Buccaneers," presented December 18. Glenn B. Starr directed, and Arthur Biggs was in charge of songs. J. L. Purdy was dramatic coach, assisted by Glen Chambers. Dancing and costumes were in charge of Miss Marion G. LeFevre and Miss Thelma Thorne.



GIRLS' GLEE CLUB

First Row: Dotson, Coshaw, Hansen, Vincent, Hearn, Shaw, Littell, Welsh, Starry, Smith.
Second Row: Ringo, D. Krouse, Porter, Olson, Krouse, McGee, Melcho, Blodgett, DeChenne.
Third Row: Sanders, E. Michel, Bysegger, R. Johnson, Castle, Jackson, Carlson, McGee, Collin, V. Michel, Bauer.

MIXED CHORUS

MEMBERS

Roger Case
 Roy Davis
 Dick Hayes
 Harold Hawkins
 Leonard Munther
 John Olson
 Ibbly Ostness
 Bob Sanders
 Robert Smith
 John Town

Louis Venti
 Sam Venti
 Stanley Wagner
 Douglas White
 Jack Wollaston
 Marcia Vincent
 Audrey Sanders
 Rosina Johnson
 Verva Hanson
 Josephine Coshaw

Jean Starry
 Beatrice De Chenne
 Ruth Littell
 Anna Mae Olson
 Dorothy Porter
 Clara McGee
 Isla Bysegger
 Gladys Smith
 Mabel Ringo

Mrs. Blanche Hill Swenson

Director

GIRLS' GLEE CLUB

MEMBERS

Violet Bauer
 Marcia Vincent
 Rosina Johnson
 Sylvia Moore
 Audrey Sanders
 Josephine Coshaw
 Elaine Michel
 Juanita Dotson
 Verva Hanson
 Beatrice DeChenne

Leona Jackson
 Carol Shaw
 Jean Starry
 June Castle
 Ruth Littell
 Betty McGhee
 Hazel Welsh
 Anna Mae Olson
 Doris Krause
 Dorothy Krause

Dorothy Porter
 Margaret Blodgett
 Doris Carlson
 Helen Collins
 Vera Michel
 Clara McGee
 Isla Bysegger
 Gladys Smith
 Mabel Ringo

Mrs. Blanche Hill Swenson

Director



RECORD STAFF—FIRST SEMESTER

First Row: Pressley, White, Brown, Corfield, Wise, Bevan, Huntley, Connor, H. Felber, Wolferman, Berg. Second Row: Mr. Byrne (adviser), Hunt, Tavares, Blake, French, Zerbst, Cooney, Avery, Davis, Wollaston, Mr. Coburn (adviser).

ROGERS RECORD

EDITORIAL STAFF

First Semester

Genevieve Bevan
Sherman Blake

Juanita Hopkins
Jack Wollaston

Helyn Felber
Marie Zumhoff
Frank Avery

Editor-in-Chief

Copy Chief

Assignment Editor

Feature Editor

Sports Editor

Office Manager

Circulation Manager

Art Editor

Exchange Editor

Second Semester

Sherman Blake

Thelma Bateman

Gladys Widner

Talbott Tripp

Bob Weaver

Lester Long

Norris Keeler

Marie Zumhoff

Clarence Zastrow

ASSISTANTS

FIRST SEMESTER

Dorothy Cooney
Vera Pressley
Edna Wise

Ann Hunt
Myrtle White
Isabella Corfield
Mildred French

Ray Oswald
Willard Wolferman
Rob Berg
Stuart Davis

Lucille Huntley
Julia Brown
Jane Connor

SECOND SEMESTER

Glen Chambers
Juanita Barth
Leonard Bogenreif
Mary Kathryn True
June McDonald
Gail Hodgson

Margaret Levos
Hazel Welsh
Norman Thompson
Don Balch
Jim Davis
Denise Johnson
Glen Pebles

Eugene Wirsch
Ray Mathis
Clyde Bemis
Ivie Wunderlich
Dorothy Gump
Helen Perry
Alma Ramey

Bob Sanders
Doris Culverwell
Beverly Mustard
Doris Fait
Virginia Rizzuto
Eugene Deromedi

BUSINESS STAFF

James Hubbard

Manager

Ray Fullerton

ASSISTANTS

FIRST SEMESTER

Elsie Zerbst

SECOND SEMESTER

Ralph Bentz

Lee Patchen

Truda Tavares

Ila Hetherington

Every two weeks an issue of the Rogers Record is published by the members of the Journalism II class. L. T. Byrne is editorial adviser; A. P. Coburn, business adviser; and F. C. Hughes, art adviser.



RECORD STAFF—SECOND SEMESTER

First Row: Blake, Weaver, Bateman, Bentz, Wirsch, Gump, Mustard, Culverwell, Wunderlich, Levos, Welsh, Pullerton. **Second Row:** Hodgson, Ramey, Barth, McDonald, Tripp, Bemis, Long, Keeler, Balch, True, Widner, Patchen, Mr. Coburn (adviser). **Third Row:** D. Johnson, Mr. Byrne (adviser), Bogenreif, Davis, Mathis, Deromedi, Thompson, Chambers, Hayes, Sanders, Pebles.

"CUB" STAFF

EDITORIAL

First Semester

Bob Weaver
Glen Chambers
Thelma Bateman
Fred Homad
Alma Ramey
Jimmy Davis
Marie Zumhoff
Ibby Ostness, Dorothy Gump

Editor-in-Chief
Assistant Editor
Assignment Editor
Copy Chief
Assistant Copy Chief
Feature Editor
Sports Editor
Office Manager
Art Editor
Exchange Editor

Second Semester

Bob Treffry
Louis Venti
Evelyn Olson
Dick Hayes
Norma Hearn
Leah Jaques
Sam Tortorelli
Eugene Shauviu
Marie Zumhoff
Maxine Rinear

ASSISTANTS FIRST SEMESTER

Frank Akins
Ervin Barber
Forrest Bishop
Leonard Bogenreif
Leonard Bottger
Elaine Cook
Howard De La Grange
Ray Dillon
Mildred Hanson
Eva Kirk
Lucille Melton
Bernell Preston
Glen Allison
Mary Kathryn True
Virginia Frye
Norris Keeler

Hazel Welsh
Bud Adams
Kenny Randolph
June McDonald
Thelma Herbert
Lester Long
Ed Moffatt
Jerry Shaw
Don Balch
Margaret Levos
Denise Johnson
Talbot Tripp
Helen Perry
Oscar Crain
Juanita Barth

Mary Dippel
Al Johnston
Ray Mathis
Glen Pebles
Norman Viles
Dale Watson
Doris Anderson
Ivie Wunderlich
Doris Culverwell
Lorraine Nelsen
Beverly Mustard
Golden Miller
Mary Jane Allison
George Whiting
Clarence Zastrow

Norman Thompson
Eugene Wirsch
Gail Hodgson
Doris Fait
Gene Deromedi
Marjorie Reynolds
Harry Mills
Paul Mack
Gladys Widner
Maurice Schudel
Bob Sanders
Clyde Bemis
Bill Bangs
Virginia Rizzuto
Hazel Baker

ASSISTANTS SECOND SEMESTER

Matt Alexander
Fred Miller
Phyllis Lammers
Lewis Freeman
Mildred Peterson
Dorothy Larson
Bob Geisler
Scynthia Pyne
Jack Jones
Grace McGhee
Florence Brennan
Jane Hill

Virgil Edstrom
John Sigmon
Gloria Lyberger
Gene Balch
Virginia Simonson
Irene Madsen
Josephine Block
Maynard Detmer
Harvey Ryan
Mary Burkhardt
Kathryn McDougall
Edith Coleman

Evelyn Walker
Bob Zat
June Carlson
Zenis Ryan
Harriette Collin
Esther Bossio
Doris Reamer
Kenny Bonner
Loretta Huneke
Bill Simpson
Wilbur Thorson
Myrtle Schalike

Fannie Farro
Val Vermillion
Gladys Bonser
Bob Scott
Ruth Fairburn
Tom Anderson
Doris Hoffman
Amelia Candelero
Catherine Faggetter
Clyde Knaggs
Bob Strantz

BUSINESS

First Semester

Ralph Bentz
Vernon Engebretsen

Manager
Assistant

Second Semester

Audrey Sanders
Robert Scott



CHAMBERS

MOUNTAIN

First Row: Gump, Bateman, Hodgson, Kirk, Frye, Welsh, True. **Second Row:** Johnson, Weaver, Brown, White, Levos, McDonald, Ramey, Mustard, Culverwell, Wunderlich, Blake. **Third Row:** Widner, Bentz, Deromedi, Venti, Long, Keeler, Rizzuto, Miller, Wirsch, Sanders. **Fourth Row:** Mr. Byrne (adviser), Tripp, Bogenreif, Engchretson, Mathis, Pebles, Thompson, Chambers, Hayes, Balch, Mr. Coburn (adviser).

TREASURE CHEST

EDITORIAL

EDITOR-IN-CHIEF

Assistant Editor

Copy Editor

Photography

Art Editor

Assistant Art Editors

Sports Editors

Clubs

Activity Lists

Snapshots

Class History

Classes

Girls' League

Boys' Federation

Calendar

Commencement

Features

Circulation

Departmental—Ivie Wunderlich, Eugene Wirsch, Ralph Bentz, Lester Long, Jimmy Davis, Clyde Bemis, Hazel Welsh, Bob Sanders, Juanita Barth, Helen Perry, Clarence Zastrow, Jane Allison, Louis Venti, Bill Bangs.

First Semester Assistants—Myrtle White, Eva Kirk, Virginia Frye, Golden Miller, Vernon Engchretson, Julia Brown, Jerry Shaw.

GLEN CHAMBERS

Norris Keeler

Margaret Levos

Denise Johnson

Lorn Wallace

Eugene Deromedi, Ira Glass

Don Balch, Glen Pebles, Alma Ramey

Gladys Widner, Gail Hodgson

Virginia Rizzuto, Leonard Bogenreif, Bob Weaver

Doris Culverwell, Thelma Bateman, Beverly Mustard

Norman Thompson

Sherman Blake

Julia Brown

Ray Mathis

Mary Kathryn True

June McDonald

Talbot Tripp

Dorothy Gump

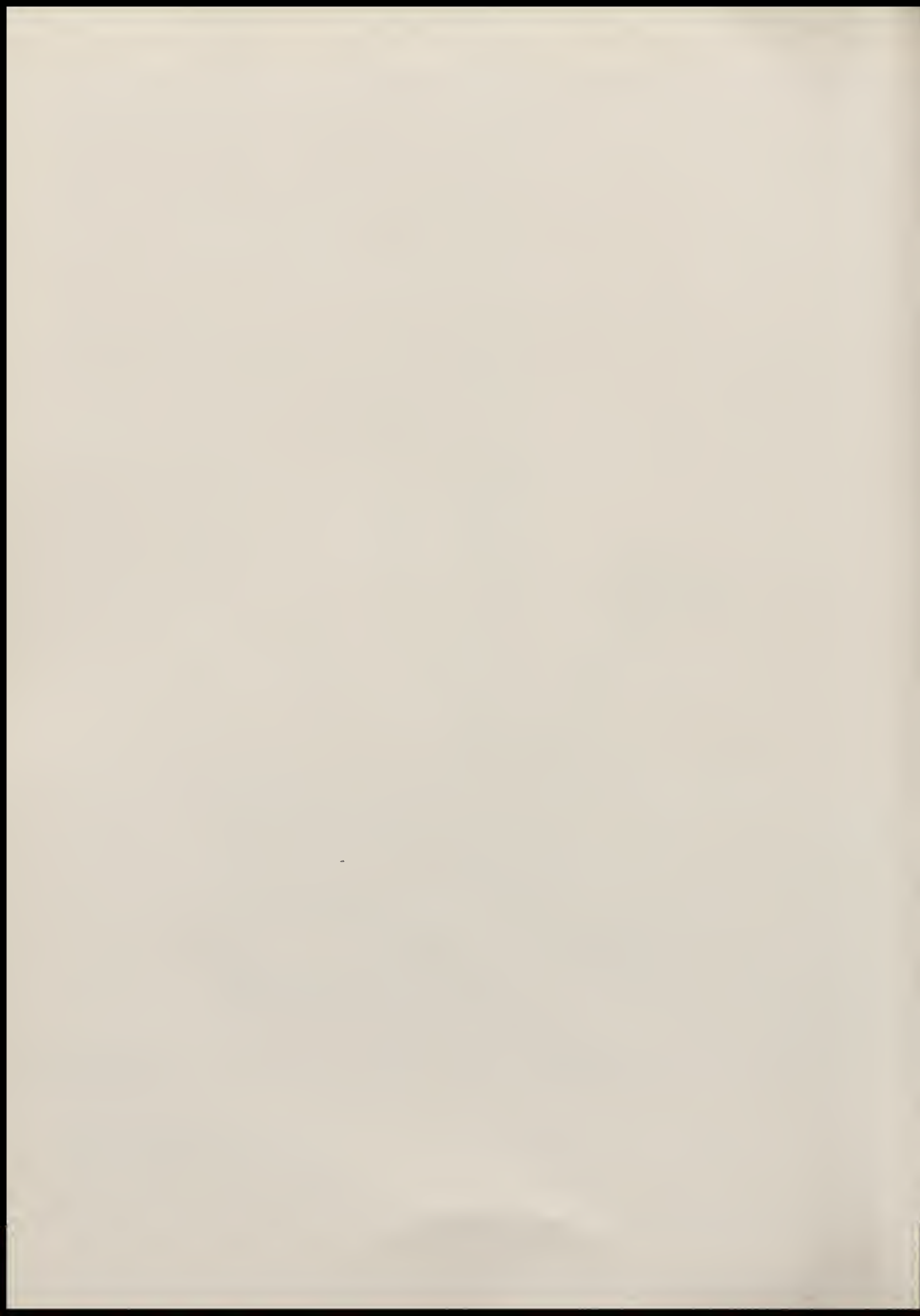
BUSINESS MANAGER

BUSINESS

YVONNE MOUNTAIN



SPORTS





First Row: Mr. Elsensohn (assistant coach), Oas, Freeman, Penna, Anderson, Innes, Davis, Miller, Mr. Bendele (head coach). Second Row: McDavis, Hughes, Carter, Leavitt, Bends, Brownell, Randolph, Crain. Third Row: Danielson, Chambers, G. Balch, Tortorelli, McDaniel, Morris, Bland. Fifth Row: Sweet, Liberty, D. Balch, Wollaston, Akins, Oswald. Fifth Row: Linebarger, Suriano, Mr. Mooberry (trainer), McGuire.

FOOTBALL

ROGERS 13: WEST VALLEY 0

Rogers started the football season by defeating the West Valley Eagles 13 to 0 on the West Valley field, September 18. In the first quarter Sam Tortorelli completed a pass to Don Balch, who ran to the 10-yard line.

Three running plays found Tortorelli over for a touchdown. The try for point was wide of the up-rights. Rogers' second score came early in the third quarter when Leavitt flipped a pass to Akins, who streaked down the side lines to score standing up. Randolph converted.

ROGERS 6: NORTH CENTRAL 0

Rogers opened the city series race by trouncing the North Central Indians 6 to 0 on the Indians' gridiron, September 24.

On the opening kickoff, Anderson of Rogers booted to Contos on the N. C. 20. N. C. smashed off-tackle six yards and completed a pass on the next play, netting them a first down.

The Pirate line then tightened, forcing Contos to kick to Tortorelli who returned it to his own 30.

After exchanging several punts, Schreiner of N. C. recovered a fumble and raced the length of the gridiron for a touchdown, but it was illegal and was called back. Near the end of the game Rogers' passing attack started working, and Balch, receiving Tortorelli's bullet-like pass, stepped over the goal line for a touchdown.

ROGERS 20: LEWIS AND CLARK 0

On the home field, October 1, Coach Bendele's Buccaneers raced through the Lewis and Clark Tigers to a 20 to 0 victory.

Early in the first quarter L. C. blocked Tortorelli's kick and recovered on Rogers' 10-yard line. They tried two line bucks and two passes but failed to score.

Rogers then passed its way to the L. C. 20 where L. C. took possession



First Row: Balch, Crain, Linebarger, Surlano, Anderson, Oswald, Wollaston. **Second Row:** Liberty, Sweet, F. Akins, Tortorelli.

of the ball. On the next play Oswald slipped through the line and neatly blocked L. C.'s kick. Balch picked it up and ran the few remaining yards to a touchdown. The try for point was no good.

In the second quarter Rogers scored again with Tortorelli running 70 yards to a touchdown. Innes kicked the point, making it 13 to 0 at the half.

In the third quarter Tortorelli passed to Balch, making another touchdown for the Buccaneers.

ROGERS 7: GONZAGA 14



Fighting valiantly but against heavy odds, the Rogers Pirates went down in their first defeat at the hands of the Gonzaga Bullpups October 9.

As the whistle blew, Rogers kicked to the Gonzaga 30 where Graham returned it to his own 38. Derr kicked out of bounds on the Rogers 25 and the rest of the quarter featured a punting duel between Tortorelli and Derr.

Early in the second quarter Gonzaga recovered a fumble on Rogers' 10-yard line where they went over for a touchdown. The try for point was no good.

Unaffected by the Bullpups' success, the Pirates steadily advanced to the Gonzaga one-yard line, where Tortorelli bucked it over for a touchdown. Sweet kicked the point, making it Gonzaga 7, Rogers 7.

Another pass from Twolhy to Derr in the end zone netted the Bullpups' second touchdown. Stanek converted and the scoreboard read: Gonzaga 14, Rogers 7.

ROGERS 12: CLARKSTON 0



During the half-way mark of the city series, Rogers traveled to Clarkston on October 17, where they defeated the Bantams, 12 to 0.

Coach Bendele started his second string but soon substituted several regulars; however, neither team was able to score and the half ended 0 to 0. A short pass to Don Balch, who ran 20 yards, brought the first Rogers' tally.

Rogers' second touchdown came when a pass to Sweet netted the Buccaneers 29 yards, and the ball was bucked to pay dirt by Sam Tortorelli.

(Continued on page 105)



First Row: Osso, Carter, McDavis, F. Akins, Balch, Wollaston, Sweet, Wirsch, Berg. Second Row: Ventti, Maek, B. Johnson, Reynolds, Pebles, Tang, Lindgren, Leavitt, McGuire. Third Row: Mr. Bendele (assistant coach), Mr. Mooberry (coach), Hill, Davis, Danielson, A. Akins, Wakely, Payne (manager).

BASKETBALL

SQUAD

Albert Akins
Frank Akins
Don Balch
Glen Carter
Bob Danielson
Jack Leavitt

Walter Lindgren
Don McDavis
Jerry McGuire
John Osso
Glen Pebles
Ed Reynolds

Curt Tang
Charles Wakeley
Don Williams
Eugene Wirsch
Harold Payne (Manager)

SEASON'S SUMMARY

Date	Opponent	Where Played	Score
Jan. 12	North Central	Rogers	27-16
Jan. 14	Lewis and Clark	Lewis and Clark	19-29
Jan. 19	Gonzaga	Rogers	20-12
Jan. 21	North Central	North Central	14-26
Jan. 26	Lewis and Clark	Rogers	34-27
Jan. 28	Gonzaga	Gonzaga	11-31
Feb. 9	North Central	Rogers	27-19
Feb. 11	Lewis and Clark	Lewis and Clark	16-40
Feb. 16	North Central	North Central	20-26
Feb. 17	Gonzaga	Rogers	20-24
Feb. 23	Lewis and Clark	Rogers	18-31
Feb. 25	Gonzaga	Gonzaga	30-12

During the 1936-37 basketball season 19 games were played by the Buccaneers, 13 in which the Pirates were victorious.

Coach Mooberry's quintet ran up against hot competition in the city league but came out holding a tie for the second position.

Lettermen who leave the Pirate quintet through graduation are Don Balch, Eugene Wirsch, Glen Pebles, and Curt Tang.



First Row: Mr. Elsensohn (assistant coach), Hughes, F. Akins, Glass, Leavitt, Williams, Stansbury, K. Bonner, Anderson, Wollaston, Crain, Mr. Mooberry (head coach). **Second Row:** Wirsch, Hill, G. Balch, De La Grange, McNamara, H. Hoisington, D. Balch, Taylor, Renstrom, Gottwig, Curryer, Liberty. **Third Row:** Tang, Eller, Gumm, Homad, West, Oster, Peterson, Graham, Hassell, Young, D. Pebles. **Fourth Row:** Kolbet (manager), Young, Adams, Tangen, Kathman, French, A. Akins, Sparks, Coules, Burkhardt, Richards. **Fifth Row:** Simpson, Jones, Goodman, Christlanson, Brewer, Young, Peterson, Ralston, O. Hoisington. **Sixth Row:** Hobbs, Weir, Morse, Wendel, Reynolds, Berg, Danielson, G. Pebles, J. Bonner, Anderson.

TRACK

SQUAD MEMBERS

Gerald Adams
Albert Akins
Frank Akins
Roy Allen
Rex Alstrom
Clarence Anderson
Ira Glass
Jack Gaffaney
John Goodman
Don Gottwig
Chester Graham
Chuck Gumm
Dan Pebles
Leroy Peterson
Irving Peterson
Bob Ralston
Bob Renstrom
Ed Reynolds
Robert Anderson
Don Balch
Gene Balch
Ralph Berg
John Bonner
Kenny Bonner
James Brewer

Glen Burkhardt
Vernon Christianson
Oscar Crain
Alton Hassell
Alfred Hill
Harry Hoisington
Owen Hoisington
Fred Homad
Glendin Hobbs
Robert Hughes
Clifford Jones
Denzil Kathman
Donald Kerr
John Richard
Bill Simpson
Harry Sparks
Bob Smith
Ken Stansbury
Clayton Tang
Roy Tangen
Winston Taylor
Floyd Taylor
Chuck Wendel
Harold Curryer
Lawrence Cowles

Dan Coyle
Edward Davis
Bob Danielson
Howard De La Grange
Jack Eller
Vernon Engebretson
Gordon French
Jack Leavitt
Dick Liberty
Dick McNamara
Laurence Wall
Duane Morris
Kenneth Muzzy
Ted Oster
Glen Patterson
Glen Pebles
Brock Weir
Truman West
Roy Williams
Jack Wollaston
Eugene Wirsch
Bob Young
Harry E. Young
James Young

SCHEDULE

Date	Opponent	Where Held
April 23	North Central	Rogers
April 30	Lewis and Clark	Rogers
May 8	Gonzaga	Gonzaga
May 14	District Meet	Lewis and Clark
May 22	State Meet	W. S. C.

Coach Jack Mooberry's track squad forecast a successful season by capturing the unofficial championship of the first indoor track meet ever held in Spokane, followed by a win at the second annual Rogers relays. Outstanding ability was shown in the several runs and the high jump. Rogers won the city championship for the first time in its history.



First Row: Weaver, Eachon, Shauvin, Osso, Innes, Bergman, Marler, Williams. **Second Row:** Hardy, Mead, Brownell, Nelson, McBreen, Dembowski, Miller. **Third Row:** Novotny, McClelland, Oberg, Shuey, Perry, Langill, Nelson, Wakeley, Mr. Black (coach). **Fourth Row:** Kludt (manager), Petty (manager), Swartz, Burrill, C. Tang, Hughes (manager), Van Slyke.

BASEBALL

SQUAD

John Brownell
Paul Bergman
Ray Burrill
Howard Clifford
Carroll Dembowski
Jack Eachon
Earl Hardy
Don Innes
Bob Johnston

Frank Langill
Fred Miller
Joe McBreen
Don McClelland
Sidney Mead
LaVerne Marier
Al Novotny
Frank Nelson
Otto Nelson

Ben Oberg
John Osso
George Perry
Bill Rathgeber
Eugene Shauvin
Curtis Tang
Bob Weaver
Charles Wakeley
Don Williams

SCHEDULE

Date	Opponent	Where Played
April 14	Lewis and Clark (postponed)	Lewis and Clark
April 22	Gonzaga	Rogers
April 28	West Valley	Rogers
May 4	North Central	Rogers
May 6	Lewis and Clark	Rogers
May 18	Gonzaga	Gonzaga
May 20	West Valley	West Valley
May 26	North Central	North Central

With the return of nine lettermen this spring, Coach J. W. Black's diamond artists began their daily practice with all indications of a promising season.



First Row: Saltz, Carter, Jones, Birchard, Moffatt, Bogenreif. Second Row: Adams, Davis, Steptoe. Third Row: McGuire.

TENNIS

SQUAD MEMBERS

Jerry McGuire
Bud Adams
Jim Davis
Leonard Thompson

Charles Moffatt
Warren Saltz
Bill Peterson
Leo Moffatt

Leonard Bogenreif
Gordon Steptoe
Don Carter

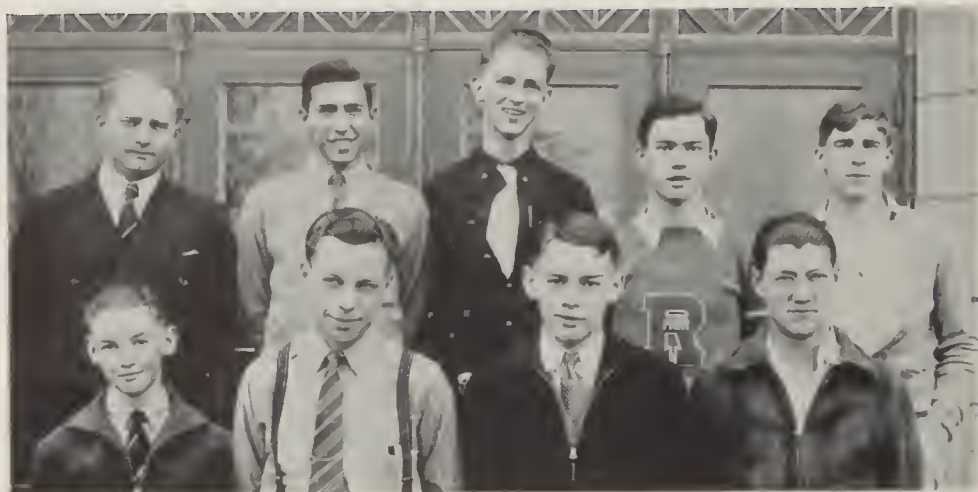
SCHEDULE

Date	Opponent	Where Played
April 27	North Central	North Central
May 5	Lewis and Clark	Lewis and Clark
May 13	Gonzaga	Rogers

This year's girls' and boys' tennis squads were entirely separate. The boys use all the courts on Tuesdays and Thursdays and half of them on Friday. A great deal of interest in tennis was aroused this year and a better brand of ball was played.

In addition to the city series games the racket wielders had matches with Otis Orchards, Central Valley, West Valley, Bonners Ferry, and Wenatchee.

Coach L. W. Saltz also supervises a tennis "B" squad of fifteen boys which was headed by Bob Kroske, Ed Reynolds, Billy Birchard, and Bill Alfstad.



First Row: M. Thompson, Shulkin, Merritt, Davis. Second Row: Mr. Becher (coach), Knaggs, N. Thompson, Knowlton, Kauffman.

RIFLE TEAM

TEAM MEMBERS

Raoul Kauffman
Clyde Knaggs
Max Thompson

Norman Thompson
Jack Merritt
Bob Shulkin
Kenny Knowlton

Kenny Davis
Gordon Flemister
Gerald Gray

Rogers' 1937 rifle team proved to be very stiff competition for the Lewis and Clark Tigers in a close 494 to 465 match at the Armory, March 24. "This score was exceptionally good for the first match of the season," Coach E. T. Becher stated. "The team also clashed with Gonzaga at the Armory on April 28."

GOLF

PLAYERS

Don Newton
Al Akins
Roy Bishop

Elmer Oas
Allen Updike
George Young
William Cozza

Charles Wakeley
Harold McCall
Jack Linden

The golf squad completed a successful season this year in the annual tournament held with the other city high schools. M. J. Benjamin is coach.



First Row: Bishop, Linden, McCall, Updike. Second Row: Mr. Benjamin (coach), Newton, Oas, Akins, Wakeley.



First Row: Eller, Hearn. Second Row: Leaf, Marsh, Renfro. Third Row: Felber, Signorelli, Hafner, Zumhoff.

SPRING SPORTS QUEEN

Spring sports were given a great big boost by the candidates for the title of "Spring Sports Queen" and their managers. From the start, the contest was close enough to keep all concerned always "on their toes." This is the third year that there has been a contest to further the sale of season tickets to the baseball games and track meets.

The 1935 contest resulted in a tie between Betty Johnson of the Harding Debate club and Vonda McMillan of the Record staff. Myrtle Harthold was crowned "Queen of Spring Sports" in the 1936 contest. The 1937 honor went to Helen Marsh, representing the newly formed Radio club. Walt Lindgren was her manager. The two princesses, the runners-up in the contest, were Marialese Eller and Norma Hearn.

The contestants and their managers in order of entry were:

Norma Hearn ("R")	Harold Linebarger
Marian Renfro (French)	Don McDavis
Helen Marsh (Radio)	Walt Lindgren
Marialese Eller (Cosmic)	John Ortner
Angelina Signorelli (Spanish)	Dick Baker
Marie Zumhoff (Art)	Forrest Burgess
Peggy Elijah (Junior Dramatic)	Warren, Saltz
June Summers (Math)	John Brownell
Jackie Haffner (Four Star)	John Olson
Ruby Leaf (Montero)	Ted Oster
Helyn Felber (Footlights)	Kenny Knowlton



First Row: Preston, Brown, Pyne, Burkhardt, McDougall. Back Row: D. Johnson, True, Cooney, Miss Perkins (coach), Schalike, Fahey, Rinear.

GIRLS' VOLLEYBALL

SENIOR B TEAM

Scynthia Pyne, Captain
Julia Brown
Maxine Rinear
Mary Kathryn True

Denise Johnson
Kathryn McDougall
Kay Fahey
Mary Burkhardt

Myrtle Schalike
Berneil Preston
Dorothy Cooney

JUNIOR A TEAM

Alma Rauey, Captain
Dorothy Porter
Barbara Anderson

Loeta Hicks
Erna Rice
Mildred Peterson

Inez Schroeder
Alice Hamaker
Gloria Lyberger

Winner of this year's volleyball tournament was the Senior B team. They were undefeated during the entire tournament, which was an unusual record. The runners-up, the Junior A team, did almost as well, losing only one game, to the Senior B team.

Peggy McLean was the volleyball manager, assisted by G. A. C. members. Miss Mabel Perkins was the coach.



First Row: McDougall, Fahey, Miller, Burkhardt, Brown. Second Row: Johnson, Pyne, Rinear, True, Ramey, Cooney. Third Row: Miss Perkins (coach).

GIRLS' BASKETBALL

SENIOR A TEAM

Golden Miller, Captain
Alma Ramey
Julia Brown
Scynthia Pyne

Kay Fahey
Dorothy Cooney
Mary Kathryn True
Mary Burkhardt

Maxine Rinear
Kathryn McDougall
Denise Johnson

JUNIOR A TEAM

Margaret Juliano
Theresa Via
Norma Hearn

Margaret Freeman
Iva Hetherington
Hazel Zurlinden
Mary Norvelli

Rose Via
Enid Edmiston
Pat Egan

Winning all their games but two, the 12A team came out on top in this year's basketball tournament. The 11A team, right behind the winners, were the runners-up with two losses and one tie.

Approximately 125 games were played, and the season was considered a great success.



First Row: Priano, Eller, T. Via, R. Via, Williamson. **Second Row:** Bond, Schemmel, Stansbury, Ortner, Collin. **Third Row:** Morse, Hamaker, Pyne, Olson, McMann, Simonson. **Fourth Row:** Miss Perkins (coach), Hodgson, Lyberger, Ramey, Thompson, Hearn, Burkhardt.

GIRLS' TENNIS

LADDER I

Thelma Bateman
Amelia Candellero
Norma Hearn
June Carlson
Scynthia Pyne
Fern Edmonson

Marialese Eller
Berneil Preston
Alice Hamaker
Fannie Farro
Rose Via
Harriette Collin

Theresa Via
Mary Schemmel
Gloria Lyberger
Laura Morse
Melvina Stansbury
Shirley Thompson

LADDER II

Louise Bond
Gail Hodgson
Alma Ramey
Marjorie Simonson
Ruth Hetherington
Ethyle Anderson
Mary Burkhardt

Maxine McMann
Agnes Sigmon
Doris Crumbley
Marion Ortner
Katherine West
June Summers
Sanda Appa

Nellie Burkhardt
Lois Hodge
Beverly Wilson
Frances Williamson
Carol Priano
Jean Corkrum
Evelyn Olson

The spring tennis squad played matches with West Valley, North Central, and Lewis and Clark.

This is the only girls' activity in which a regular Rogers "R" can be earned. Tennis is a worth while course for those wishing to participate in inter-school competition. Miss Mabel Perkins is coach.



**"FIRST AID" to "AILING"
FOUNTAIN PENS . . Now 50c**



**This Is
What
You Get
for
50c**

Here is an "Operation" that Will Put the old Pen Back to Writing Perfection. Real Satisfaction to Fountain Pen Owners

- 1—A brand-new live-rubber "ink" sack.
- 2—Smoothing of acid pits on nib.
- 3—Clearing of "barnicle" sediments in ink channel.
- 4—Adjusting and smoothing of the point.
- 5—A general "toning-up."

Bring your pen in now. There is no charge for a "consultation." We carry parts for all nationally advertised pens and guarantee the work

Fountain Pen Dept.—Sprague Ave. Floor

John W. Graham & Co
— If Its Made of Paper We Have It —

707-711 Sprague Ave.

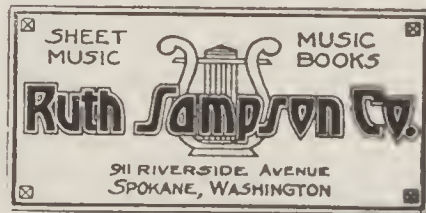
708-716 First Ave.

POEME
(Dedicated to Dick Hayes)

Once upon a midnight dreary
As he sat and called her dearie
On a sofa made for one, but holding more
Sddently there came a tapping
As of someone gently rapping
Rapping at the parlor door,
"Tis' my father, dear," she murmured
"Only he and no one more."
What cared he for her relations?
He was full of exclamations
Such as "Dearie, does oo love oo's dearie
more?"
But her father tired of waiting
Waiting growing aggravating,
Opened wide the parlor door.
Oh how well that he remembered
That cold night in bleak December
As he flew out twenty paces from the door.
And for life will be branded
Where her father's foot had landed.
Quoth the raven "Never more."

FAMOUS SAYINGS

Denise Johnson says a circle is a line of no
depth running round a dot forever.



Most Thrilling of all

GIFTS

for Girl Graduates

A Genuine

LANE CEDAR CHEST

Pratt Furniture Co.

Employers Praise Northwestern Business College

"We have had seven or eight
excellent employees who
were trained at North-
western. Your teachers pro-
duce first-class office
workers. We will most as-
suredly call upon North-
western again whenever we
are in need of office help."

SPOKANE RADIO
COMPANY
SOUTH 317 HOWARD STREET
Near L. C. H. S.



"We have found graduates
of your school to be ef-
ficient and thoroughly train-
ed workers. We have several
employed in our organi-
zation at the present time,
and we feel that they are
above the average."

BROWN-JOHNSTON
WHOLESALE CO.

South 317 Howard Street

Graduation speaker: "When you graduate from here may you have patience and prove yourself not irascible; may you pertinaciously cling to your concentrated thought of the future; and let not pusillanimity interfere with your indigenous desire for performing supererogatory labors.

Senior victim: "And here my dad went and told me to get a job.

Fashion note for men (by Frank Akins, Treasure Chest's fashion expert): There will be little change in trouser pockets this year.

For Your Next Suit, Coat,
Dress and Knit Wear—See

Wolper's
819 Riverside

PETERS & SONS

Highest
Quality
Flowers

LOCALLY GROWN
LAST LONGER

GRAYSON'S

Congratulations, GRADUATES

MAY WE share with you the thrill of Commencement Day—marking the completion of one happy Chapter, and the beginning of another!

Whether YOUR Tomorrow is to be Collegiate or Commercial, you will find that correct apparel—at Grayson's—is an asset.

Our Policy:

Courteous Service
and complete satisfaction,
or refunds
gladly given.

GRAYSON'S
W. 523 RIVERSIDE AVE.

Headquarters for School
HATS AND CAPS

All Kinds of Letters and Mono-
grams Made to Order
Get My Price Before Buying

VARNEY
MAKES SHIRTS

208 S. Howard Riverside 8811

COMPLETE PRESCRIPTION
SERVICE AND SICKROOM
SUPPLIES

All Day and All Night at Spokane's
Only All Night Pharmacy

Hart & Dilatush

Professional Pharmacists

9 N. Stevens Main 2111

Agents for Marcelle Non-Algerie
Toilet Articles

O. M. Matthews, Pres.

L. G. Balfour Co.
of Attleboro, Mass.

Makers of Class and
Fraternal Jewelry

Are Pleased to Announce the
Appointment of

MANDELL'S
Distinctive Jewelers
611 RIVERSIDE AVE

as Their Special Representatives

Note: Beautiful Models for
1937 Rogers Classes Now in
Preparation

Your friendships of today
may be kept ever bright
and fresh in ANGVIRE
quality portraits



Angvire Studio of
Artistic Portraiture
FERNWELL BUILDING

(Continued from page 90)

ROGERS 19: NORTH CENTRAL 6

Opening the second half of the city race, Rogers defeated the North Central Indians, October 23, on the Pirate gridiron.

The Indians scored first with Ferguson running 20 yards to score standing up. The try for point was wide. Rogers' first touchdown occurred when Sam Tortorelli threw a long pass to Wollaston in the end zone for six points. Sweet's try for point was blocked.

Rogers scored their second touchdown when Penna blocked a kick which Crain snatched and ran 30 yards for a touchdown.

In the fourth quarter Rogers advanced the ball to the N. C. one foot line, where Innis bucked it over on the fourth down. Sam Tortorelli's drop kick was the only successful conversion of the day.

ROGERS 13: LEWIS AND CLARK 7

Making their own breaks and taking advantage of them at the right time, Rogers defeated the Lewis and Clark Tigers 13 to 7 at Hart field, October 30.

In the beginning of the second quarter L. C. was unable to gain until a pass to Erie was completed on the four-foot line. On the next play L. C. bucked over for the first touchdown.

Rogers' first touchdown occurred when the Pirates marched to the L. C. three-yard line where Liberty plunged over for six points. Sweet's try for point was blocked.

Rogers totaled another six points when Crain broke through to block a

(Continued on page 107)



ROGERS GRADUATES! TRAINING Means Success!

After Rogers, the short cut to a successful business career is a course at KBU. If you are going to college, shorthand and typing, or Stenotype (machine shorthand) will make your college work easier.

KBU's Efficient Employment Department Finds Positions for All KBU Graduates

Enter KBU any Monday; set your own pace. KBU is in session all summer. Inspect KBU any school day.

All tuition refunded if you're not entirely satisfied the first month. Unused tuition refunded any time.



KBU student operating the Burroughs-Moon-Hopkins Billing Machine.



Miss Dorothy Ruark, Spokane, John Rogers High School graduate, taking KBU Secretarial Course.



KBU student operating the Stenotype.

KINMAN BUSINESS UNIVERSITY

S. 110 HOWARD

Main 1132

SLIPS THAT PASS IN THE TYPE

Three shots rang out. Two of the servants fell dead, the other went through his hat.

It was raining cats and dogs, and there were poodles in the road.

The judge was very kind. He asked the deceased if he had anything to say.

Benjamin Franklin died in 1790 and is still dead.

Many of the Indian heroes were killed, which proved fatal to them.

DEDICATED TO JACK WOLLASTON

Mary had a little lamb
Some string beans and dessert
And when I came to pay the bill
I had to hock my shirt.

A novelist declares that the best cure for hysteria is a kiss. The only problem now is how to give a girl hysterics, according to John Brownell.

Jane: "Louis Venti's mustache makes me laugh."

Val Vermillion: "Yeh, it tickled me, too."

MANDELL'S

Are Showing



All the New 1937 Models



in Elgin, Bulova, Hamilton and
Waltham Watches for the
Graduate

No Money Down—A Year to Pay

MANDELL'S
Distinctive Jewelers
611 RIVERSIDE AVE

Congratulations Class of '37

from

NOBLE'S Inc.
Smart Uniforms—Latest Men's Wear
Corner Post and First

(Continued from page 105)

kick, and Liberty picked the ball out of the air and raced for a touchdown. The Pirates' defense held and the ball sailed through the uprights, making the final score 13 to 7.

ROGERS 0: GONZAGA 32

Getting off to a bad start but steadily improving, Rogers took a 32 to 0 drubbing from the mighty Gonzaga eleven in the annual Shrine game.

Gonzaga scored 13 points in the first quarter and 12 in the second.

Although Rogers was overcome by the score in the first half, they came back fighting in the second half, repeatedly stopping the Bulldog threats.

The feature of the game was the loyal support and enthusiasm from the Rogers rooting section.



BEST WISHES
to the
GRADUATES OF 1937

Dorian Studio

701 Peyton Bldg.

————— The New
NELSON
Studio —————

Ground Floor Location in the
Sherwood Bldg. Lobby

Conceded to be
The Finest Studio
in the Pacific Northwest

Casey's

Extend Congratulations
to the Class of 1937

See Our Classy Shoes for
Graduation
\$1.98 to \$3.45

Sater's Market
MONROE AT INDIANA

EACH DEPARTMENT OPERATED
BY ITS OWNER

Burger Bros. Quality Meats—Bob and
Charlie Best in Fruits and Vegetables
—Saters Grocery, Bakery and Dairy
Products

Open 365 Days of the Year
From 7 a. m. to 9 p. m.

**Will Rattlesnake Hills
Natural Gas Field Become
a Commercial Oil Field?**

This and other questions concerning
Washington State's Future Oil Possibilities
are answered every Tuesday night at 8 p. m.
at 303 Hutton Bldg.

NO ADMISSION CHARGE
BRING YOUR FRIENDS

WHO WROTE THIS

I wish I was a crow's egg
Away up in a tree
A settin' in my little nest
As bad, as bad could be.

I wish a little boy would come
And smile at me with glee
And then I'd burst my little self
And cover him with me.

OUR LITTLE AUDREY STORY

Little Audrey was riding in a taxi along a mountain road. The taxi driver was swinging around curves at 60 miles an hour when suddenly the driver yelled, "Look out, Audrey, we're going over a cliff!"

But little Audrey just laughed and laughed, because she knew the cab was yellow.

Charles Moffatt says the reason why you see the smoke out of a gun before you hear the report is because the report comes out of the gun before the noise.

Fred Miller: "What people live in the Po valley?"

Margaret Levas: "Po' people."

For Prompt Service and

GOOD CANDIES

CALL

G. Philo

Brdwy. 3344W

Duthie Seed Co.

R. W. NEVILLE, MGR.

510 Main Ave.

Spokane, Wash.

**Spokane Film
Developing Co.**

Ask for NU TONE

Fine Grain Developing and Printing
Mention Annual When Leaving Your
Order and Receive Discount

315 S HOWARD

RIV. 0414

Safeway

●
**Quality Foods
at
Saving Prices**

The Best Place to Trade

**Independent
Market and Grocery**

WM. HUNN, Prop.

E. 2909 Diamond Glen. 1199

Only the highest quality meats are stocked. Sold at lowest prices with good quality, and guaranteed to satisfy.

**Cured Meat, Fresh Fish
Oysters and Sea Food
in Season**

THANK YOU

Thos. E. Kehoe

Hardware, Machinery, Furni-
ture, Paints, Plumbing, Wall
Paper

Glen. 1183

5002-04 Market St.

The Marella

C. G. TEMPLE, Proprietor

E. 3009 Diamond Ave. Glen 2831

Groceries, School
Supplies, Fountain Service

PERRY'S FOOD STORE

FREE DELIVERY

If It's Good to Eat Perry's Have It
Shop Where Prices Fit the Purse

Market and Queen

Glen 3551

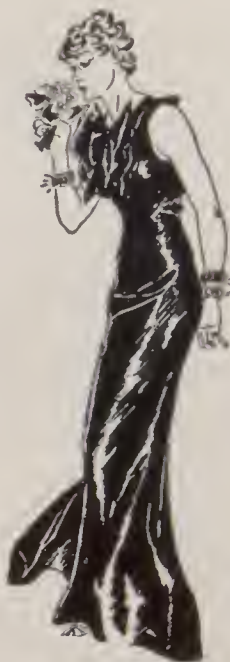
HILLYARD Optical Company

Optometrists

HILLYARD
N. 4801-03 Market St. Glen 0172

SPOKANE
410 Fernwell Bldg. Main 4914

Associated Licensed Optometrists
Dr. J. L. Davey, Dr. A. E. Reynells



When It Comes to . . .

Formals

Wraight's Store

Leads the Procession

Every school girl appreciates the
value of Wraight's formal dresses
— hand picked by experts—direct
from New York.

Wraight's

Main and Wall

Riv. 5442



RILEY'S

Candies of Quality

Riley Candy Company
SPOKANE



The Le Roi

5017-21 N. Market

Shoes

Dry Goods

Groceries

Make the LeRoi Your Store as Well
As Ours

"Everything to Eat and
Wear"

CALENDAR

FIRST SEMESTER

SEPTEMBER

- 9—School Opens
- 24—Football: N. C., 6-0

OCTOBER

- 1—Football: L. C., 20-0
- 9—Football: Gonzaga, 17-14
- 15—Hoagland Con
- 20—Open House
- 26-27—Teachers' Institute
- 28—Football: N. C., 19-16

NOVEMBER

- 3—Dr. Kraeger's Talk
- 4—Harding Debate Pay Con
- 11—Shrine Game, 0-32
- 12-13—Exams
- 18—Footlights Con
- 25—All-School Play
- 26-27—Thanksgiving Vacation

DECEMBER

- 4—Debate: Davenport
- 8—Cub Edition
- 18—Operetta, "Buccaneers"
- 24—Christmas Vacation

JANUARY

- 4—End of Christmas Vacation
- 8—National Honor Society Con
- 12—Basketball: N. C., 27-16
- 14—Basketball: L. C., 19-29
- 15—Debate: Gonzaga
- 19—Basketball: Gonzaga, 20-12
- 20—Triangular Debate
- Dramatics Class Pay Con
- 21—General Awards Con
- Basketball: N. C., 24-26
- 22—Senior Exams
- 24—Baccalaureate
- 26—Commencement
- Pay Con (Dramatic Impersonation)
- Basketball: L. C., 34-27
- 27—Exams
- 28—Basketball: Gonzaga, 11-31
- 29—Report Cards

SECOND SEMESTER

FEBRUARY

- 9—Basketball: N. C., 27-19
- 11—Basketball: L. C., 16-40
- 18—Basketball: L. C., 20-26



SKY'S

CLEANERS and TAILORS

Suits to Order—Expert
Repairing

1723 N. MONROE ST.

Call For and Delivery Service

PAY LESS Drug Store

W. 602 Riverside Ave.

Congratulations to the
June Graduates of John R.
Rogers High School

National Dollar Store

CORNER MAIN AND HOWARD

A Nation Wide Institution

- 19—Basketball: G., 28-24
Washington Birthday Con
22—Holiday
23—Basketball: L. C., 18-31
24—All School Dance
25—Basketball: G., 30-18

MARCH

- 3—Junior-Senior Play Hour
4—Move-Up Con
9—"Electricity" Con
12—All School Play, "The Show Off"
Awards Con
16—P.-T. A. Open House
17—"Treasure Chest" Con
22—"No More Frontier"
24—A. A. U. Track Meet
Harding Debate Pay Con
26—P.-T. A. Hi-Jinx
31—Spring Sports Queen Con

APRIL

- 2—Band Concert
Report Cards
5-9—Spring Vacation
14—Baseball: L. C.
16—Major Schoff Pay Con
21—Footlights Pay Con
22—Baseball: Gonzaga

- 23—Track Meet: N. C.
27—National School Assemblies Pay Con
(Lincoln Players)

MAY

- 7—Band Concert
17—Girls' League General—Boys' Federation
Department Meetings
21—Music Festival Program
29—Cosmic Club Outing

JUNE

- 5—Footlights Outing
6—Baccalaureate
9—Commencement

City Drug

Opposite the Bank

5019 Market Glen. 1765

School Supplies, Candy, Gum

Stop and Get Them at

Blodgett's

HILLYARD Laundry

Cleaning and Pressing

Clean Clothes Are a
Mark of Distinction

E. 3108 Olympic Avenue
Glen. 2430

Buy With

CONFIDENCE

From Your

HOME TOWN GROCER

Stone's

Meats --- Groceries

Operating Eight Modern
Food Markets in Spokane

Your Entire Food Require-
ments Under One Roof

Stan Densow
ELECTRIC

Willard Batteries, Goodyear Tires,
Philco and RCA Radios, ABC and
Easy Washers, Frigidaires and G. E.
Refrigerators

4820 N. Market St.

Glen. 1501

Grant's Grocery

Groceries, Lunch Meats,
Fruits, Vegetables, Ice
Cream, Candy's

School Supplies

Corner Market and Wabash

**Gerlach Motor
Company**

Your Chevrolet Dealer

Congratulations to the
Class of 1937

N. 4724 Market St., Spokane, Wash.

CONGRATULATIONS

to the

Graduates of 1937

Royce Studio

N. 4905 Market St.

Jewelers

For **50** Years



GRUEN - - LONGINES
ELGIN - - HAMILTON
Watches

at

DODSON'S

517 Riverside Ave.

SPOKANE'S LARGEST
JEWELRY STORE

A Home Owned Store That
Sells Quality Merchandise
for Cash

BRIDGEPORT
Grocery and Market

We Deliver

Glen. 0580

I **Liberty Market** I
G **and Grocery** G
A A

CONGRATULATIONS, CLASS of
1937

GROCERIES, MEATS
FRUITS and VEGETABLES

N. 5109 Market St.

FRESHMAN FOOTBALL

Rogers' Baby Buccaneers came through a very successful season winning the championship football title of the city. They lost no games, tied one, and won three. Scores of the games were as follows:

Rogers 26	Central Valley 0
Rogers 7	Lewis and Clark 0
Rogers 13	Gonzaga 6
Rogers 7	North Central 7

The regular backfield consisted of Burkhardt, Ramey, Hansen, and Sandberg, the captain. The frosh line, averaged 173 pounds, was as follows: Decker, Harry Young, McCammond, Lewis, and Irby. The promising list of substitutes was composed of Broadhead, Taylor, Waldron, and Peterson. L. W. Saltz is coach of freshman football.

FRESHMAN BASKETBALL

Coach Bendele's "Bouncing Baby Buccaneers" ran up against hot competition throughout the whole 1936-37 basketball season. A series of games were played, chiefly with the city high schools.

Despite the fact that the freshmen were small and inexperienced, Coach Bendele managed to turn out a very good quintet.

Numerals were awarded to the following at a special convocation: Roy Allen, Bill Alfstad, Jack Cartwright, Walter Decker, Jim Maloney, Art Maye, Wesley Moe, Dan Pebles, Vincent Pickens, Sam Ramey, Jack Sandberg, Don Shulkins, Bud Taylor, Robert True, and Earl Waldron.

BURGAN'S

Groceries

Buy Your Quality Groceries at
Burgan Stores and Save Money!

John T. McBride

Dental Surgeon

United Hillyard Bank Bldg.

SUCCESS TO

"The Pirate Crew"

Exchange

Lumber and
Manufacturing
Company

"Everything for the Manual
Arts Student"

Office and Residence Glen 0369

Dr. G. W. Loughlin
DENTIST

E. 3003 Diamond Avenue
SPOKANE, WASH.



Superior in Quality and Flavor
Ask for It From Your Grocer

OUR
Congratulations
TO THE
GRADUATING
CLASS



Arden Farms Co.

AT
Sartori & Wolff
YOU CAN BUY
A Beautifully Styled Yellow
Gold



**ELGIN
WATCH**

for only

\$25

You can always depend
on the finest quality at
the lowest cost at Sartori
and Wolff.

Sartori & Wolff
Makers of Fine Jewelry
NORTH 10 WALL STREET

COMPLIMENTS
of
Centennial
Flouring Mills Co.

SPOKANE, WASH.

Maxwell & Franks

WESTINGHOUSE
Refrigerators — Washing Machines
Ironers

STEWART WARNER
Refrigerators—Radios

G. E. Ranges

First and Wall

Main 2279

HEALTH HINTS

Place your back against the wall and walk away from it.

To stop a nose bleed, stand on your head till your heart stops beating.

A permanent set of teeth consists of 8 canines, 8 cuspids, 2 molars and 8 cuspidors.

If you are sick a physician should be insulted.

Thelma Bateman: "They say money talks."

John Ortner: "The only thing I ever heard it say was goodbye."

(We never got near enough to hear it say anything.)

Lilian Bonner: "Did you hear the aspirin story?"

Al Hill: "No."

Lilian Bonner: "You know the one about the three Bayers."

Keith Campbell: "Something seems to be wrong with the engine, it—"

Alma Peterson: "Don't be silly, wait 'til we get off the main road!"

**KEEP HEALTHY
DRINK**

Hillyard Dairy Milk
PERFECTLY PASTEURIZED

Hillyard Dairy

Glen. 0176

BUESCHER

Instruments

SOPRANI ACCORDIONS

Russ Bailey

911 Riverside—Opposite Post Office

MASQUERADE AND THEATER COSTUMES

All "Make Up" Materials
Reasonably Priced

Miller-Dervant

Costumers, Characterizers, Wig
Makers and Beauty Parlors

1015-17 W. Riverside Ave. M. 6642

H I X
Market and Grocery
W. H. HIX, Prop.

Fresh, Salt and Smoked
MEATS

Notions and Family Drugs

Phone Glen 3716 N. 3430 Crestline St.
Spokane, Washington



When the Label Says

ROUNDUP

You May Be Sure It's the Best of
Its Kind

**CANNED FRUITS,
FISH and
VEGETABLES**

Packed under strictest scientific conditions and guaranteed to give satisfaction.

**THE CREAM OF
THE PACK**



Silver Loaf Bakers
Work day and night
To make scrumptious things
For your delight!



For better breads
And pastry sweet,
Ask for Silver Loaf
Daily treats.

Slowly baked
With electric heat,
They are the grandest
Things to eat.

Listen in . . . Two Silver Loaf Features

Exciting Round the World Flight; The Adventures of Bill, Mack and Jimmy---5:15 Monday, Tuesday, Wednesday, Thursday, Friday . . . KGA.

Silver Loaf Roving Hill Billy---4:00 daily (except Sunday)KHQ.

SILVER LOAF
BAKING COMPANY

THE ORIGINAL JOKE

Mr. Becher: "How many wars were waged against Spain?"

Curtis Tang: "Six."

Mr. Becher: "Enumerate them."

Curtis: "One, two, three, four, five, six."

TEN YEARS FROM NOW

Clerk: "Are you looking for something in men's clothing?"

Harvey Ryan: No, I'm looking for something in woman's clothing. I lost my wife.

OLDS Trombones

King Band Instruments

Instrument Repairing
a Speciality

Hoffman Bros.

MUSIC COMPANY

816½ W. Riverside Ave., 2nd Floor

**WE APPRECIATE
YOUR PATRONAGE**

**Baird-Naundorf
Lumber Co.**

DEALERS IN

LUMBER

Building Material, Paint
and Fuel

N. 3607 Market St. Phone Glen. 3660

IT IS EASY TO DRY DISHES AND POLISH
GLASSWARE WITH

**RED BIRD
Tea Towels**



These Unusual Dish Dryers Are Lintless and Highly Absorbent, and Are Ready to Use Without "Breaking In."

AN IDEAL GIFT

Sold in Most Retail Stores

ORIGINATED AND MANUFACTURED ONLY BY

Spokane Toilet Supply Company

POME
By Kenny Knowlton

There's nothing I know
That makes me so sore
As catching my nose
In a locker door.

'NOTHER POME
(By Gene Balch)

Early to bed
Early to rise
Keeps your big brother
From wearing your ties.

Short-sighted lady (in grocery): "Is that the
head cheese over there?"
John Sigmon: "No, ma'am, that's one of his
assistants."

Dorothy Gump: "Is your horse a dray horse?"
Oscar Crain: "It's a brown horse—cut the
baby talk."

Esther Johnson thinks that the names of the
three wise men are Winken, Blinken and Nod."

Edythe Colony (describing a railway journey): "You have to get a ticket, which is like
a piece of paper, and you give it to a man who
cuts a hole in it and lets you pass through."

Bill Bangs stopped his Ford in front of a
toll bridge.

"Thirty cents," said the gateman.
"Sold!" shouted Bangs.

Marie Zumhoff: "What does a hat do in
winter?"

Bob Weaver: "It splits if you don't oil it."

Owl Drug Co.

Two Stores to
Serve You

Riverside and Wall
and
Post and Main

We Supply Your Table With the
Best to Be Had in

Vegetables and Fruits

Try Us

Diamond Cash Grocery

Regal and Diamond Glen. 0020

CONGRATULATIONS

to the
GRADUATES

of
JOHN R. ROGERS
High School

J. C. Penney Co.

POST AND RIVERSIDE

"It Pays to Shop at Penneys"

Mike Scaler & Son

FRESH FRUITS
AND
VEGETABLES

New Location
RIVERSIDE FOOD SHOP

820 Riverside Ave. M. 5207

Compliments of

Ideal Laundry Co.

Ideal Dry Cleaners

E. 17 Boone Ave. Brdwy. 1200



*So that You
need not guess*

*We maintain ample
equipment and an ex-
perienced art and
mechanical staff —
So that our patrons
need leave nothing to
chance*

**THE
SPOKANE AMERICAN
ENGRAVING COMPANY**
Established 1904

